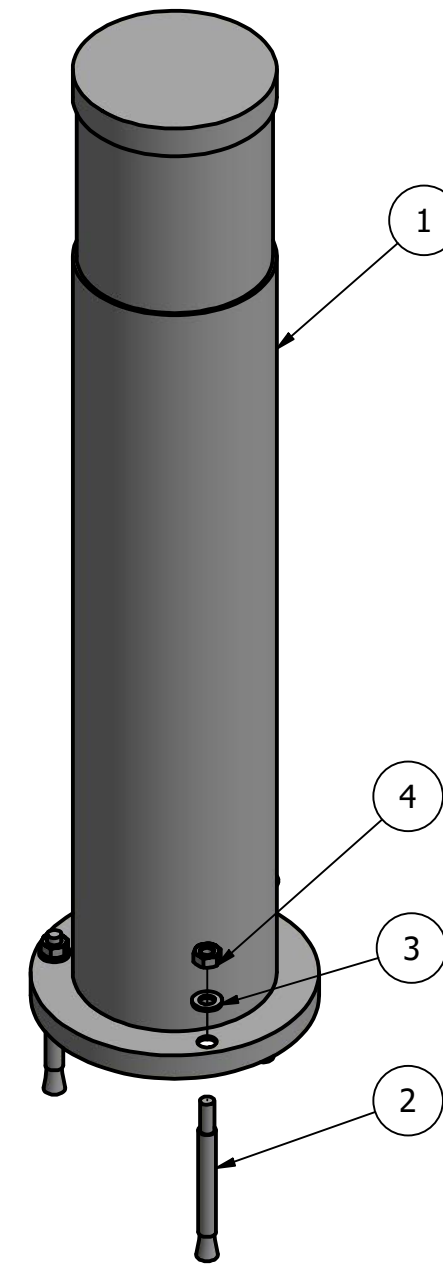
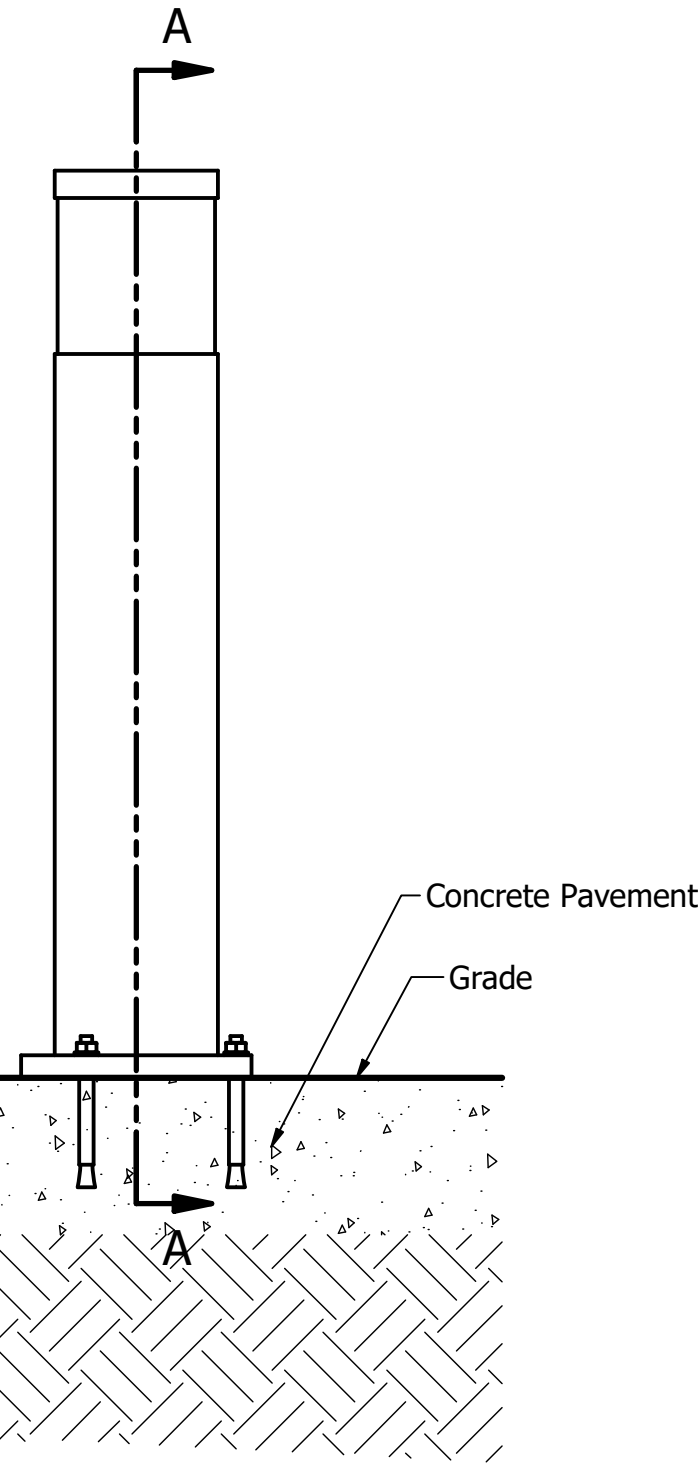
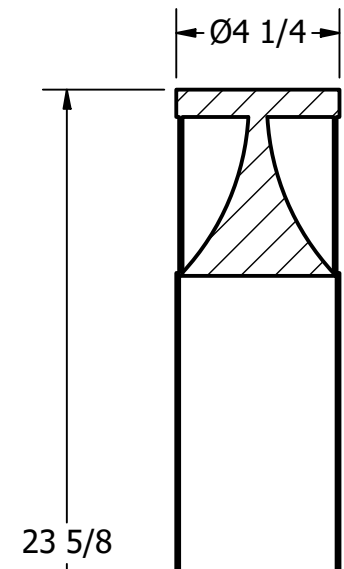
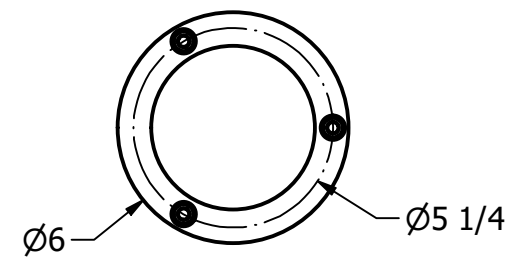


Bollard R-9832



SECTION A-A

Notes:

- Embedment details are for reference illustration only. Minimum foundation sizes depend on local soil conditions, weather conditions, and engineering requirements.
- Bollard post is provided as shown, with material detailed in legend below. Concrete, foundation and/or installation ordered separately or provided by others.
- This drawing is not drawn to scale. Dimensions provided herein is for reference only. Please consult Reliance Foundry sales professionals if any dimension is critical to your particular installation.
- Reliance Foundry reserves the right to amend design and specifications without prior notice for product improvement.

General Description:

Reliance Foundry's R-9832 bollards enhance pathway visibility at night using efficient LEDs. Hardwired lit bollards are a great alternative to solar-powered bollards for areas that do not receive enough sunlight. These bollards have a clean, simple design that feels at home in any environment. Install almost anywhere that has access to wired power.

For more information on bollard post installation, please visit: www.reliance-foundry.com/bollard/installation-bollards

Specifications:

Height: 23 5/8"
 Base Diameter: 6"
 Weight: 4 lbs
 Material: Aluminum

RELIANCE FOUNDRY
 SINCE 1925

Unit 207, 6450 - 148 Street, Surrey, BC V3S 7G7, Canada
 1-877-789-3245 info@reliance-foundry.com
www.reliance-foundry.com

TITLE			
Bollard R-9832			
SIZE	DWG NO	REV	
C	R-9832 ASSY	A	
NOT TO SCALE		SHEET 1 OF 1	

PARTS LIST					
ITEM	QTY	PART NUMBER	DESCRIPTION	MATERIAL	MASS
1	1	R-9832	R-9832 Bollard	Aluminum	4 lbs
2	3	Anchor M8 X 80MM	Anchor M8 X 80MM	Stainless Steel	
3	3	Washer M8	Washer M8	Stainless Steel	
4	3	Hex Nut M8	Hex Nut M8	Stainless Steel	