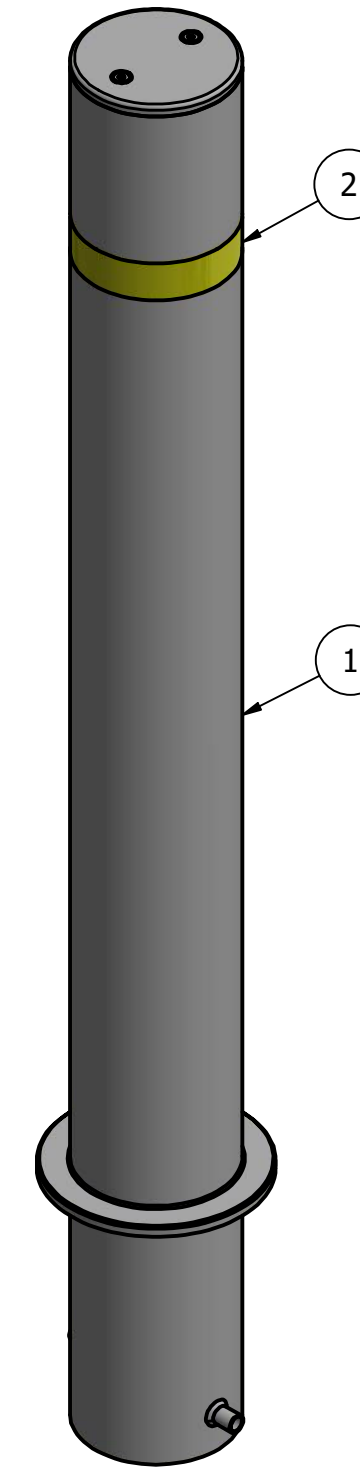
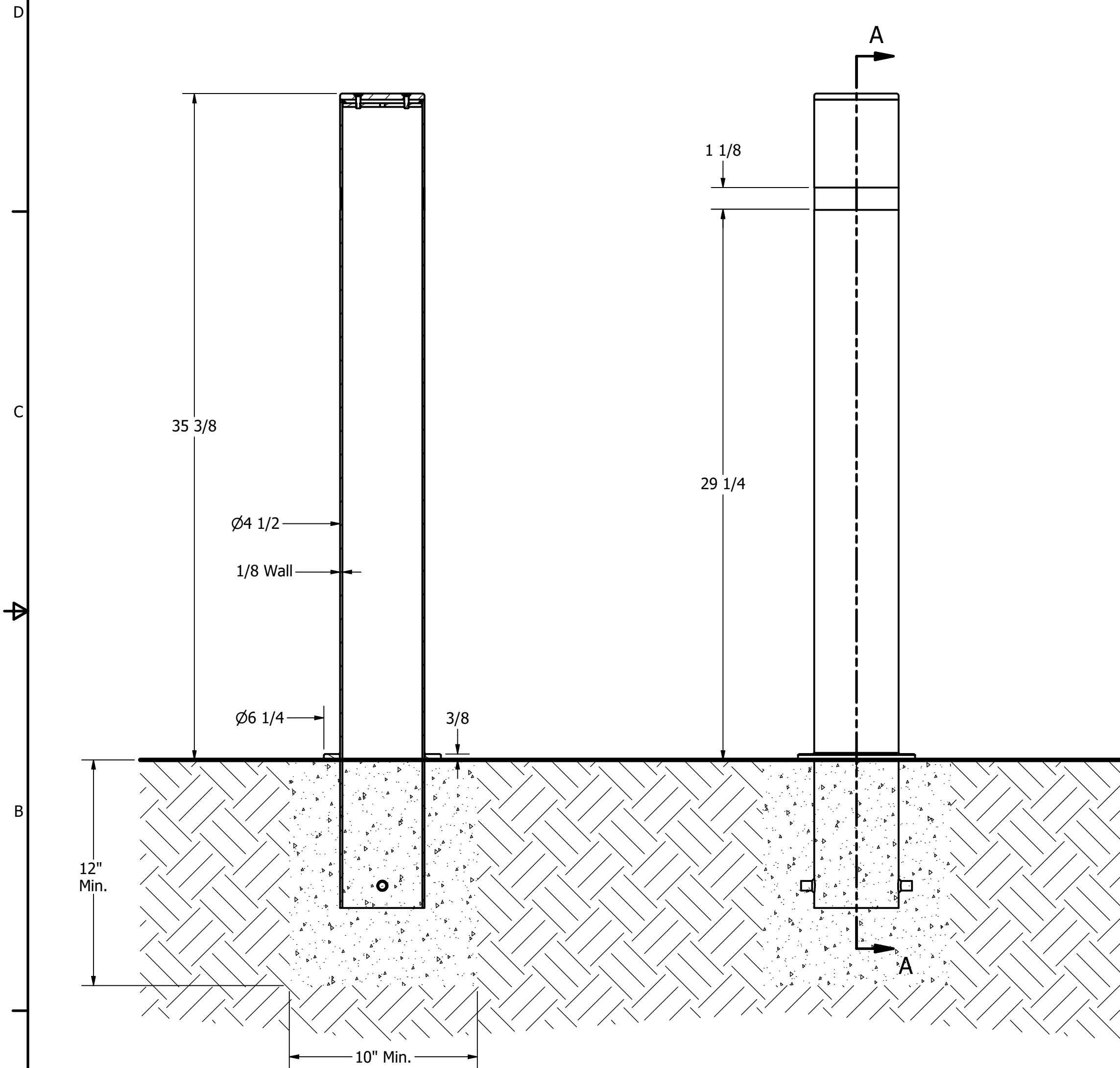


# Bollard, Model R-9460



## General Description:

The R-9460 stainless steel bollard can be embedded in concrete for fixed, secure installation. Alternative mountings are also possible for retractable and removable styles. The simple, clean aesthetic suits a wide range of infrastructure, including modern architecture. Composed of reliable 316 stainless steel with #6 satin finish to prevent corrosion and wear. Optional reflector stripes offered in 1 of 4 standard colors.

For more information on bollard post installation, please visit: [www.reliance-foundry.com/bollard/installation-bollards](http://www.reliance-foundry.com/bollard/installation-bollards)

## Specifications:

Height: 35 3/8"

Base Diameter: 4 1/2"

Weight: 24 lbs

Material: Stainless Steel 316

Finish: Satin Surface Finish Buffed No. 6

### Reflective Tape Options:

- Yellow
- White
- Red
- Blue
- None (Default)

## Notes:

### SECTION A-A

- Embedment details are for reference illustration only. Minimum foundation sizes depend on local soil conditions, weather conditions, and engineering requirements.
- Bollard is provided as shown, with parts listed below. Concrete foundation and/or installation not provided by Reliance Foundry.
- This drawing is not drawn to scale. Dimensions provided herein is for reference only. Please consult Reliance Foundry sales professionals if any dimension is critical to your particular installation.
- Reliance Foundry reserves the right to amend design and specifications without prior notice for product improvement.

PARTS LIST					
ITEM	QTY	PART NUMBER	DESCRIPTION	MATERIAL	WEIGHT
1	1	R9460	R9460 Fixed Bollard	Stainless Steel 316	24 lbs
2	1	Reflective Tape (Optional)	Optional Reflective Tape, Max. 1-1/8" Width	Plastic	

**RELIANCE FOUNDRY**  
— SINCE 1925 —

Unit 207, 6450 - 148 Street, Surrey, BC V3S 7G7, Canada  
1-877-789-3245 info@reliance-foundry.com  
[www.reliance-foundry.com](http://www.reliance-foundry.com)

TITLE			
<b>Bollard R-9460</b>			
SIZE	DWG NO	REV	
C	R9460	C	