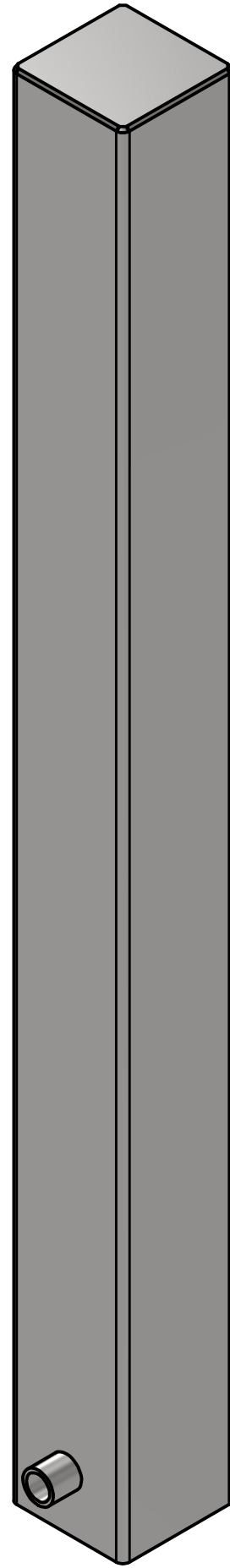
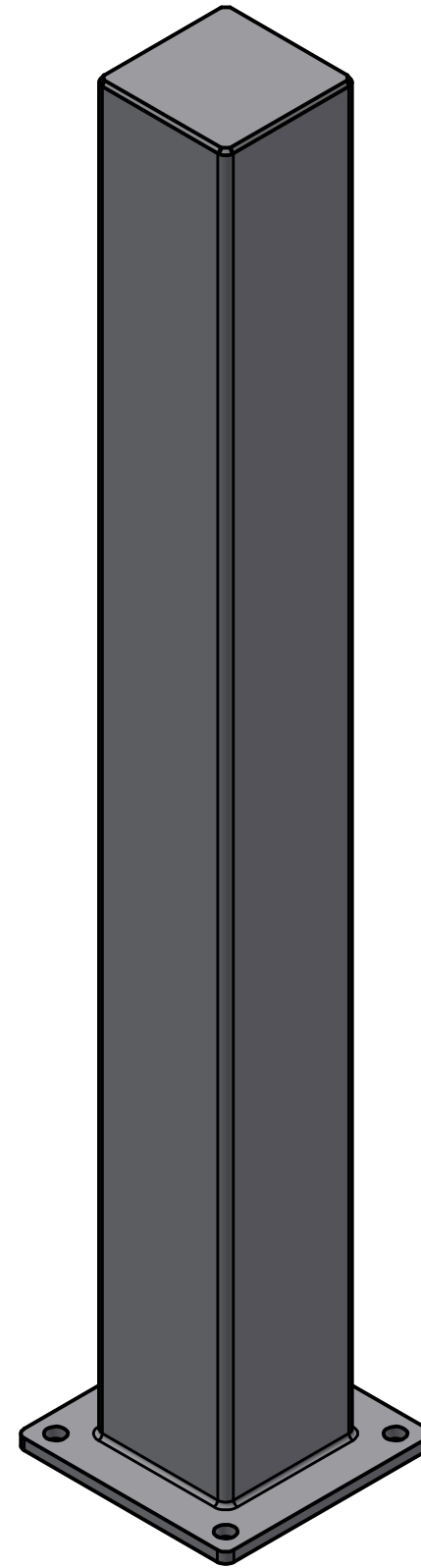


Bollard Post, Model R-8915

Fixed
Embedded
Mount
(for detail, see sheet 2 of 3)



Flanged
Surface
Mount
(for detail, see sheet 3 of 3)



2 Available Mounting Options

General Description:

The R-8915 decorative stainless steel bollard has a square design, efficiently utilizing surface space while offering security for both urban and industrial settings. Stainless steel has high visibility and stands strong against corrosive outdoor weather. Installation options include flanged and embedded mounting systems.

For more information on bollard post installation, please visit:
www.reliance-foundry.com/bollard/installation-bollards

Specifications:

Height: 36" (Above Grade) Standard
35 1/2" (Above Grade) Flanged

Post Profile Dimension: 3 15/16" x 3 15/16" Square
[100mm x 100mm Square]

Weight: 23 lbs (Bollard Post Full Length)

Material: Stainless Steel 316

Finish Options:

- Satin Surface Finish Buffed No. 6
 - Polyester Powder Coated (Optional)
- See Reliance Foundry's standard color options at
www.reliance-foundry.com/bollard/colors-bollards

RELIANCE FOUNDRY
SINCE 1925

Unit 207, 6450 - 148 Street, Surrey, BC V3S 7G7, Canada
1-877-789-3245 info@reliance-foundry.com
www.reliance-foundry.com

TITLE

Bollard Post, Model R-8915

SIZE

C

DWG NO

R-8915

REV

A02

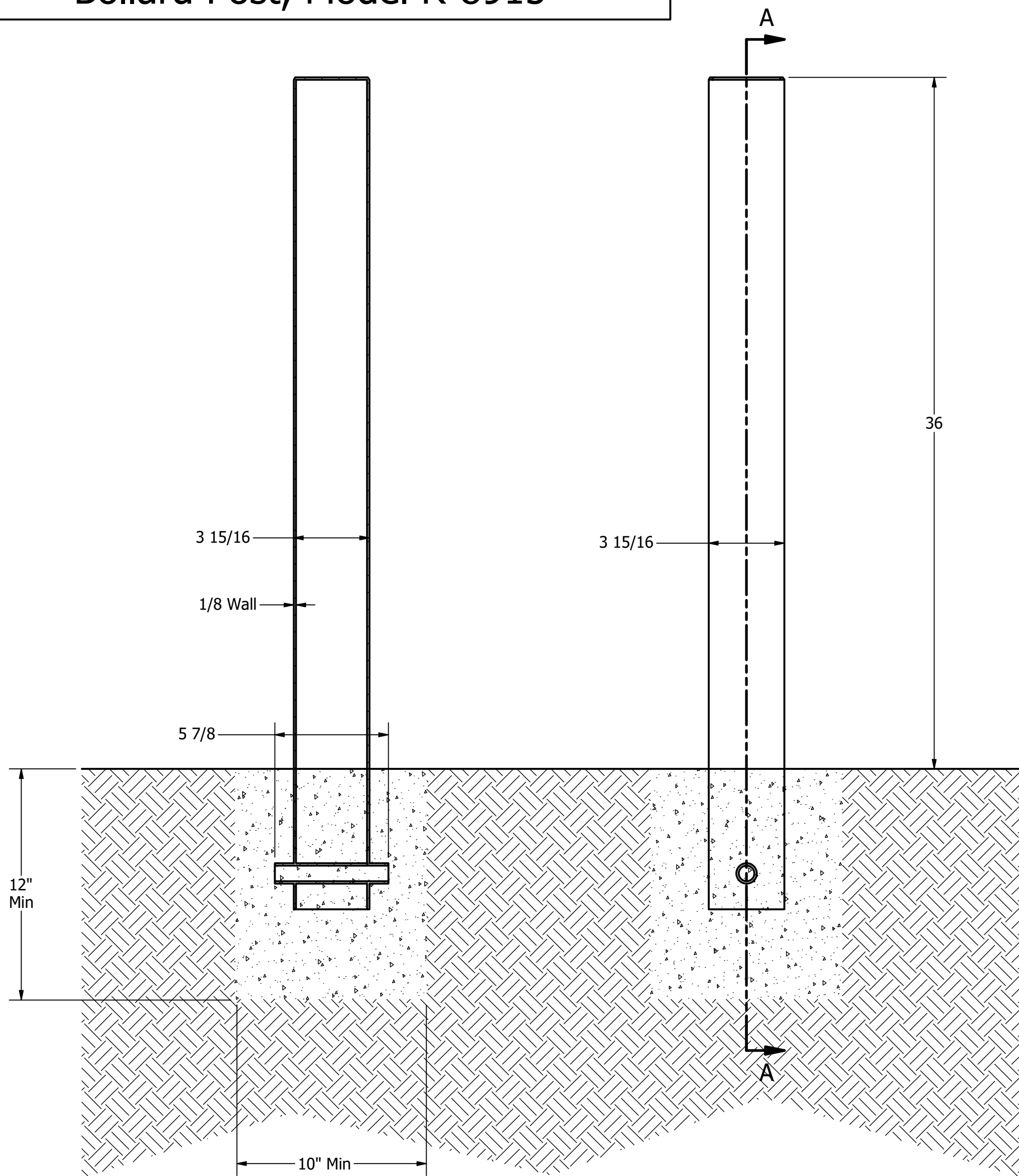
Bollard Post, Model R-8915

D

C

B

A



SECTION A-A

Fixed Installation in New Concrete

Notes:

- Embedment details are for reference illustration only. Minimum foundation sizes depend on local soil conditions, weather conditions, and engineering requirements.
- Bollard post is provided as shown, with material detailed in legend below. Concrete, foundation and/or installation ordered separately or provided by others.
- This drawing is not drawn to scale. Dimensions provided herein is for reference only. Please consult Reliance Foundry sales professionals if any dimension is critical to your particular installation.
- Reliance Foundry reserves the right to amend design and specifications without prior notice for product improvement.

General Description:

The R-8915 decorative stainless steel bollard has a square design, efficiently utilizing surface space while offering security for both urban and industrial settings. Stainless steel has high visibility and stands strong against corrosive outdoor weather. Installation options include flanged and embedded mounting systems.

For more information on bollard post installation, please visit: www.reliance-foundry.com/bollard/installation-bollards

Specifications:

Height: 36" (Above Grade) Standard
35 1/2" (Above Grade) Flanged

Post Profile Dimension: 3 15/16" x 3 15/16" Square
[100mm x 100mm Square]

Weight: 23 lbs (Bollard Post Full Length)

Material: Stainless Steel 316

Finish Options:

- Satin Surface Finish Buffed No. 6
 - Polyester Powder Coated (Optional)
- See Reliance Foundry's standard color options at www.reliance-foundry.com/bollard/colors-bollards

Mount Options:

- ✓ Fixed Embedded Mount (see sheet 2 of 3)
- Flanged Surface Mount (see sheet 3 of 3)

RELIANCE FOUNDRY
— SINCE 1925 —

Unit 207, 6450 - 148 Street, Surrey, BC V3S 7G7, Canada
1-877-789-3245 info@reliance-foundry.com
www.reliance-foundry.com

TITLE

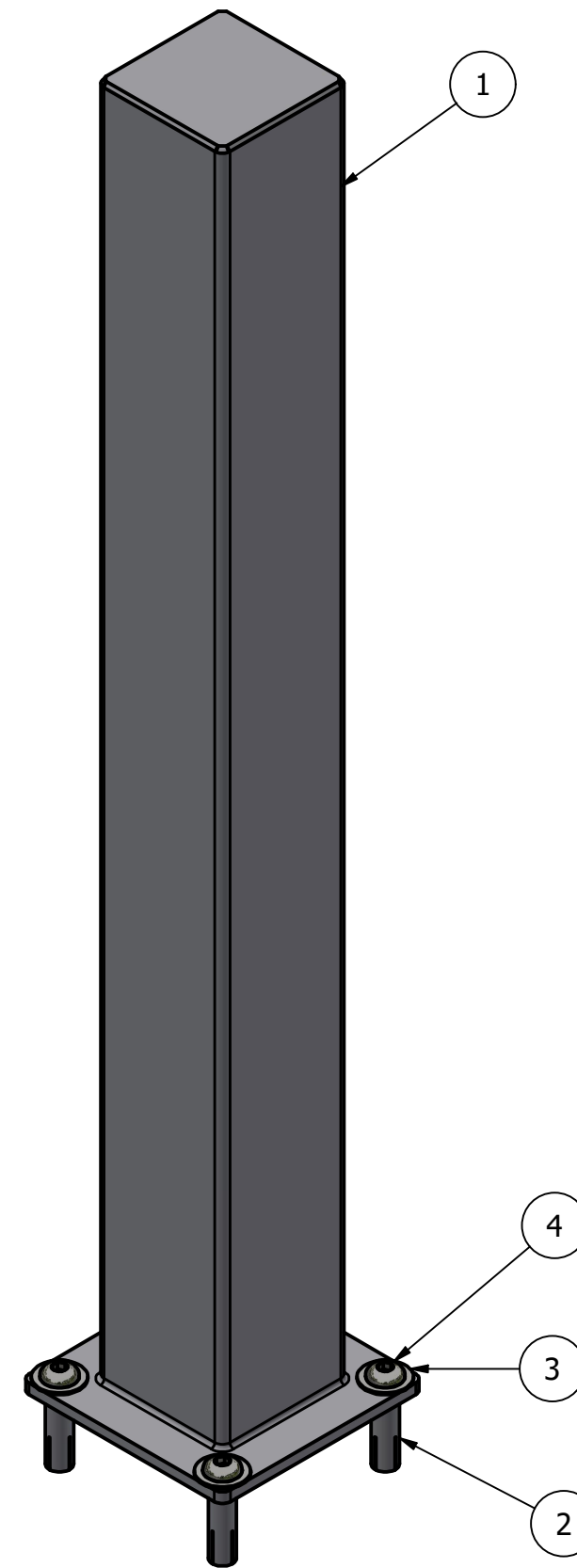
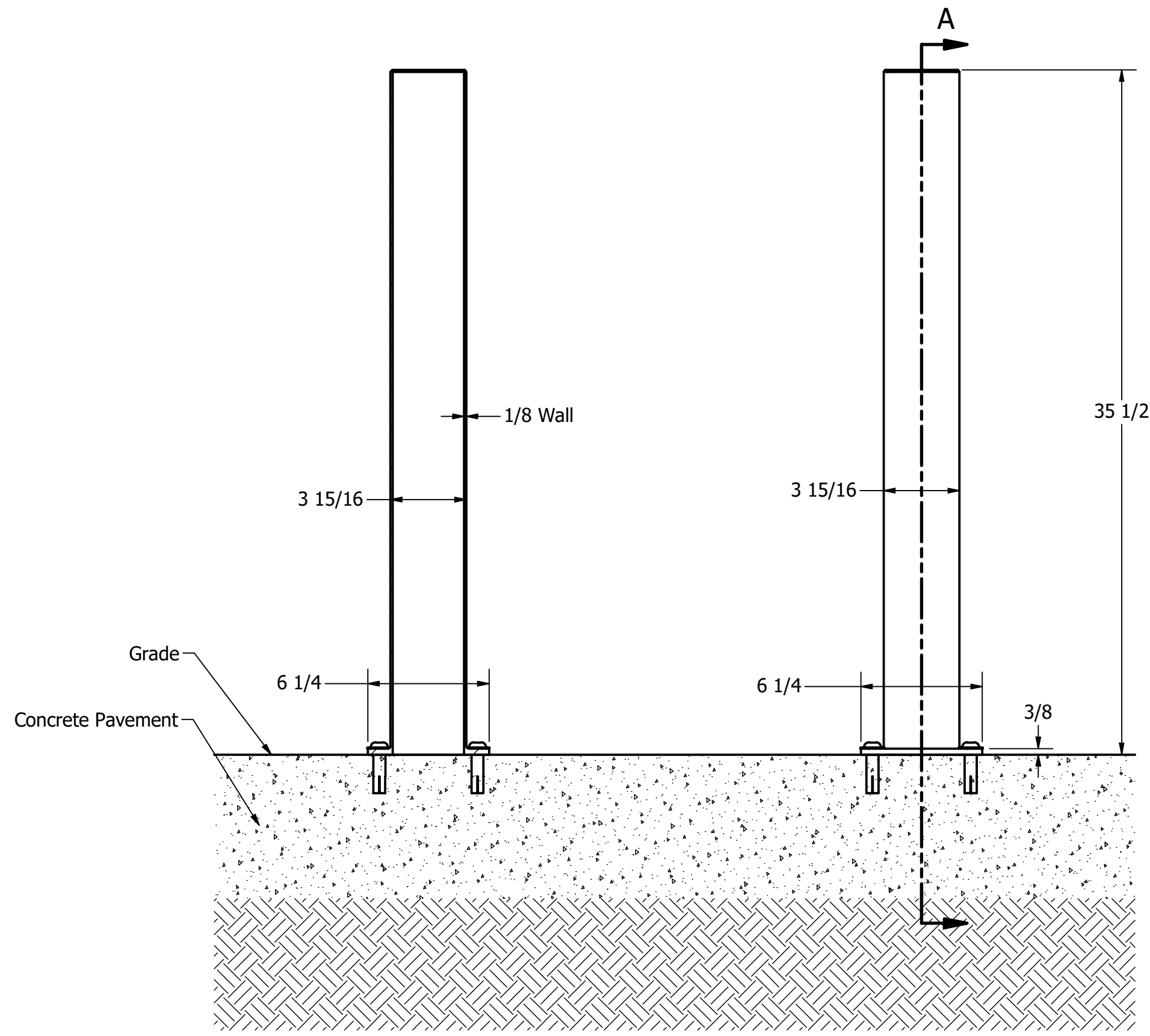
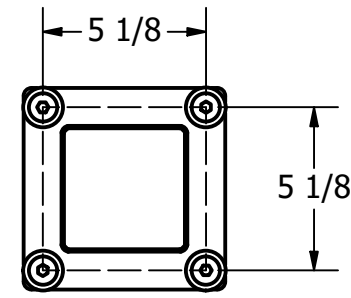
Bollard Post, Model R-8915

SIZE
C

DWG NO
R-8915

REV
A02

Bollard Post, Model R-8915



General Description:

The R-8915 decorative stainless steel bollard has a square design, efficiently utilizing surface space while offering security for both urban and industrial settings. Stainless steel has high visibility and stands strong against corrosive outdoor weather. Installation options include flanged and embedded mounting systems.

For more information on bollard post installation, please visit: www.reliance-foundry.com/bollard/installation-bollards

Specifications:

Height: 36" (Above Grade) Standard
35 1/2" (Above Grade) Flanged

Post Profile Dimension: 3 15/16" x 3 15/16" Square
[100mm x 100mm Square]

Weight: 23 lbs (Bollard Post Full Length)

Material: Stainless Steel 316

Finish Options:

- Satin Surface Finish Buffed No. 6
 - Polyester Powder Coated (Optional)
- See Reliance Foundry's standard color options at www.reliance-foundry.com/bollard/colors-bollards

Mount Options:

- Fixed Embedded Mount (see sheet 2 of 3)
- ✓ Flanged Surface Mount (see sheet 3 of 3)

Notes:

- Embedment details are for reference illustration only. Minimum foundation sizes depend on local soil conditions, weather conditions, and engineering requirements.
- Bollard post is provided as shown, with material detailed in legend below. Concrete, foundation and/or installation ordered separately or provided by others.
- This drawing is not drawn to scale. Dimensions provided herein is for reference only. Please consult Reliance Foundry sales professionals if any dimension is critical to your particular installation.
- Reliance Foundry reserves the right to amend design and specifications without prior notice for product improvement.

Flanged / Surface Mount

PARTS LIST			
ITEM	QTY	PART NUMBER	DESCRIPTION
1	1	R8915 Flanged Bollard Body	R8915 Flanged Bollard Body
2	4	Drop-in Concrete Insert 1/2"	Drop-in Concrete Insert 1/2" - requires 5/8" x 2" hole (dia. x depth)
3	4	Stainless Steel Washer 1/2"	Stainless Steel Washer 1/2" OD 1 1/4" Thick .05"
4	4	Button Head Bolt 1/2" x 1 1/4"	Hexagon Socket Button Head Cap Bolt 1/2" x 1 1/4" - requires 5/16" hex key

RELIANCE FOUNDRY
— SINCE 1925 —

Unit 207, 6450 - 148 Street, Surrey, BC V3S 7G7, Canada
1-877-789-3245 info@reliance-foundry.com
www.reliance-foundry.com

TITLE
Bollard Post, Model R-8915

SIZE C	DWG NO R-8915	REV A02
------------------	-------------------------	-------------------