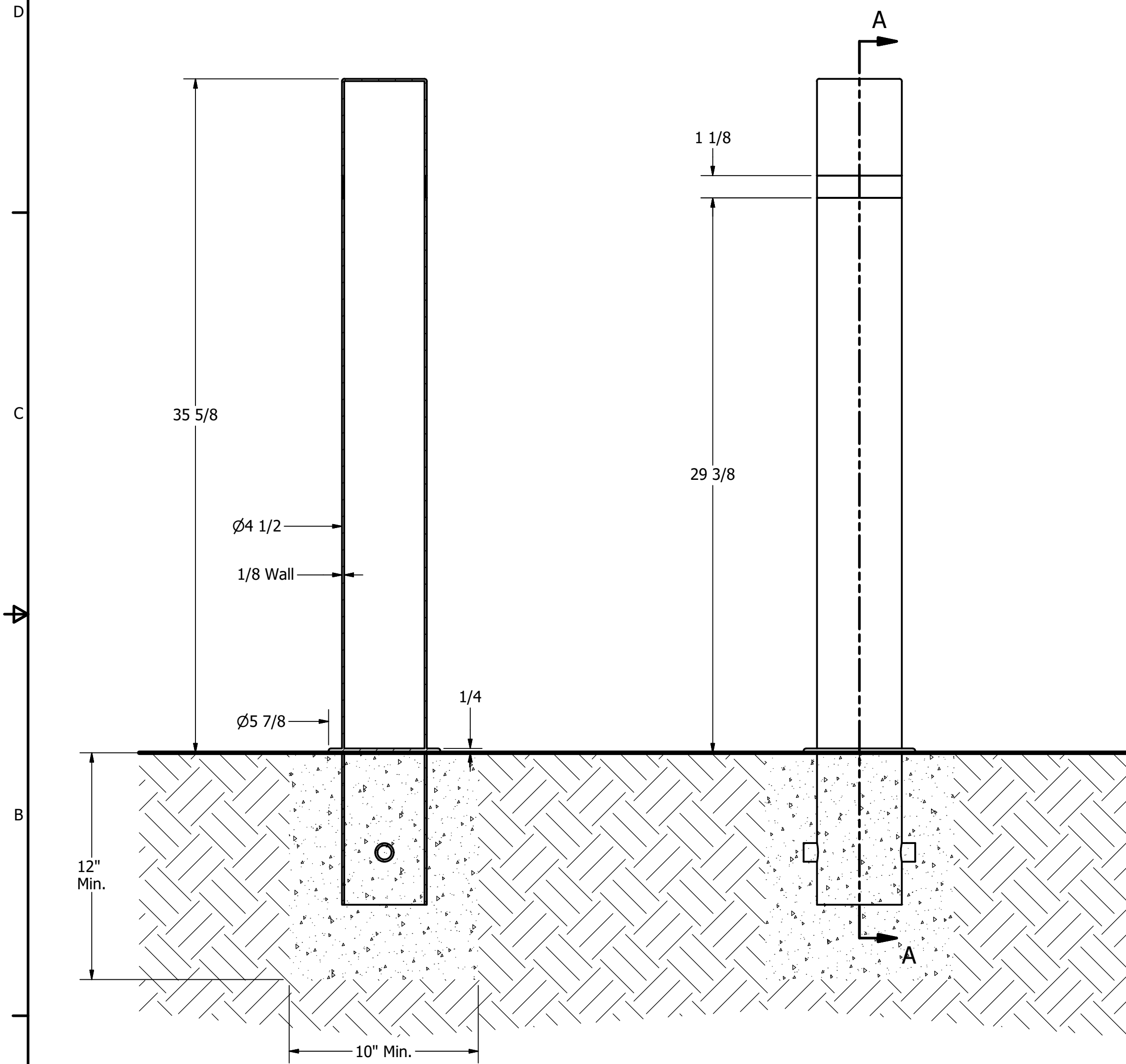


# Bollard, Model R-8460-RA



## General Description:

The R-8460-RA Stainless Steel Bollard can be embedded in concrete for simple and secure installations. Its clean and versatile design is highly visible and available with alternative mountings (see retractable and removable models) for consistent aesthetics that suit any modern building or landscape. High-quality 316 grade stainless steel features high resistance to corrosion and weathering. Posts ship standard with 1 of 4 colored reflector stripes. Choose from 6 standard coating options

For more information on bollard post installation, please visit:  
[www.reliance-foundry.com/bollard/installation-bollards](http://www.reliance-foundry.com/bollard/installation-bollards)

## Specifications:

Height: 35 5/8"

Base Diameter: 4 1/2"

Weight: 21 lbs

Material: Stainless Steel 316

Finish: Polyester Powder Coated

See Reliance Foundry's standard color options at  
[www.reliance-foundry.com/bollard/colors-bollards](http://www.reliance-foundry.com/bollard/colors-bollards)

## Reflective Tape Options:

- ⊙ Yellow
- White
- Red
- Blue
- None

## Notes:

### SECTION A-A

- Embedment details are for reference illustration only. Minimum foundation sizes depend on local soil conditions, weather conditions, and engineering requirements.
- Bollard is provided as shown, with parts listed below. Concrete foundation and/or installation not provided by Reliance Foundry.
- This drawing is not drawn to scale. Dimensions provided herein is for reference only. Please consult Reliance Foundry sales professionals if any dimension is critical to your particular installation.
- Reliance Foundry reserves the right to amend design and specifications without prior notice for product improvement.

PARTS LIST					
ITEM	QTY	PART NUMBER	DESCRIPTION	MATERIAL	WEIGHT
1	1	R8460RA	R8460RA Fixed Bollard	Stainless Steel 316	21 lbs
2	1	Reflective Tape (Optional)	Optional Reflective Tape, Max. 1-1/8" Width	Plastic	

**RELIANCE FOUNDRY**  
SINCE 1925

Unit 207, 6450 - 148 Street, Surrey, BC V3S 7G7, Canada  
 1-888-735-5680 info@reliance-foundry.com  
[www.reliance-foundry.com](http://www.reliance-foundry.com)

TITLE

**Bollard R-8460-RA**

SIZE  
**C**

DWG NO  
**R8460RA**

REV  
**C**