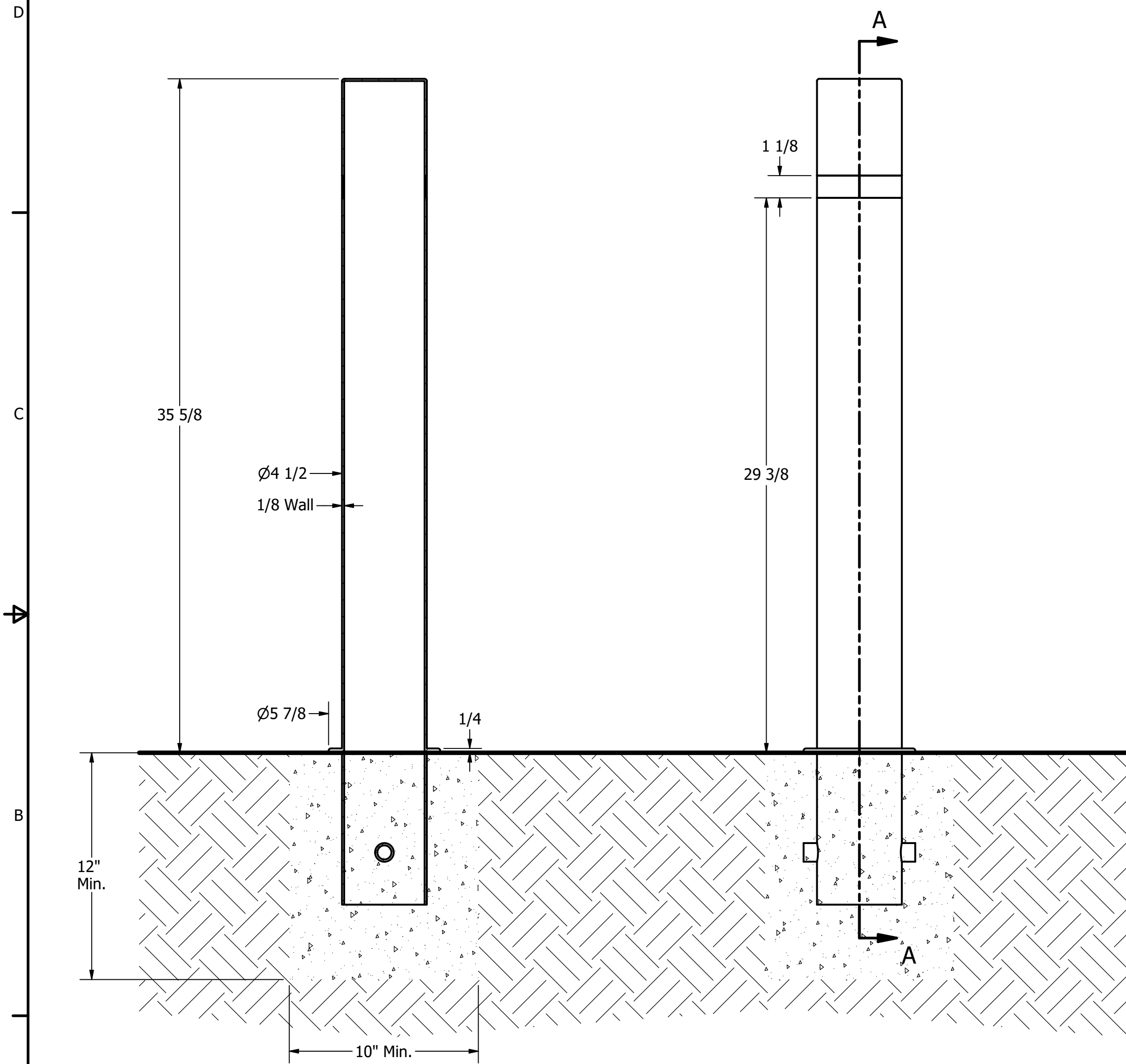


# Bollard R-7460



## General Description:

The R-7460 Steel Bollard can be embedded in concrete for simple and secure installations. Its clean and versatile design is highly visible and available with alternative mountings (see retractable removable models) for consistent aesthetics that suit any modern building or landscape. High-quality carbon steel with a powder coated finish features high resistance to corrosion and weathering. Posts ship standard with 1 of 4 colored reflector stripes.

For more information on bollard post installation, please visit: [www.reliance-foundry.com/bollard/installation-bollards](http://www.reliance-foundry.com/bollard/installation-bollards)

## Specifications:

Height (Above Grade): 35 5/8"

Body Diameter: 4 1/2"

Weight: 22 lbs

Material: Carbon Steel, Grade Q235

Finish: Powder Coated

### Reflective Tape Options:

- Yellow
- White
- Red
- Blue
- None (Default)

## Notes:

### SECTION A-A

- Embedment details are for reference illustration only. Minimum foundation sizes depend on local soil conditions, weather conditions, and engineering requirements.
- Bollard is provided as shown, with parts listed below. Concrete foundation and/or installation not provided by Reliance Foundry.
- This drawing is not drawn to scale. Dimensions provided herein is for reference only. Please consult Reliance Foundry sales professionals if any dimension is critical to your particular installation.
- Reliance Foundry reserves the right to amend design and specifications without prior notice for product improvement.

PARTS LIST					
ITEM	QTY	PART NUMBER	DESCRIPTION	MATERIAL	WEIGHT
1	1	R7460	R7460 Fixed Bollard	Carbon Steel, Grade Q235	21.6 lbs
2	1	Reflective Tape (Optional)	Optional Reflective Tape, Max. 1-1/8" Width	Plastic	

**RELIANCE FOUNDRY**  
SINCE 1925

Unit 207, 6450 - 148 Street, Surrey, BC V3S 7G7, Canada  
1-877-789-3245 info@reliance-foundry.com  
[www.reliance-foundry.com](http://www.reliance-foundry.com)

TITLE

**Bollard R-7460**

SIZE  
C

DWG NO  
R7460\_public

REV  
A03