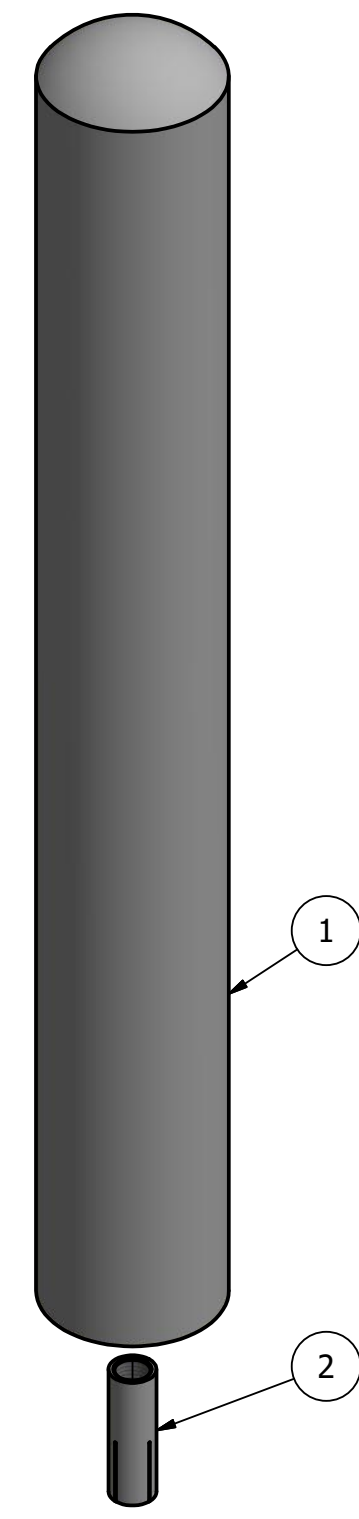
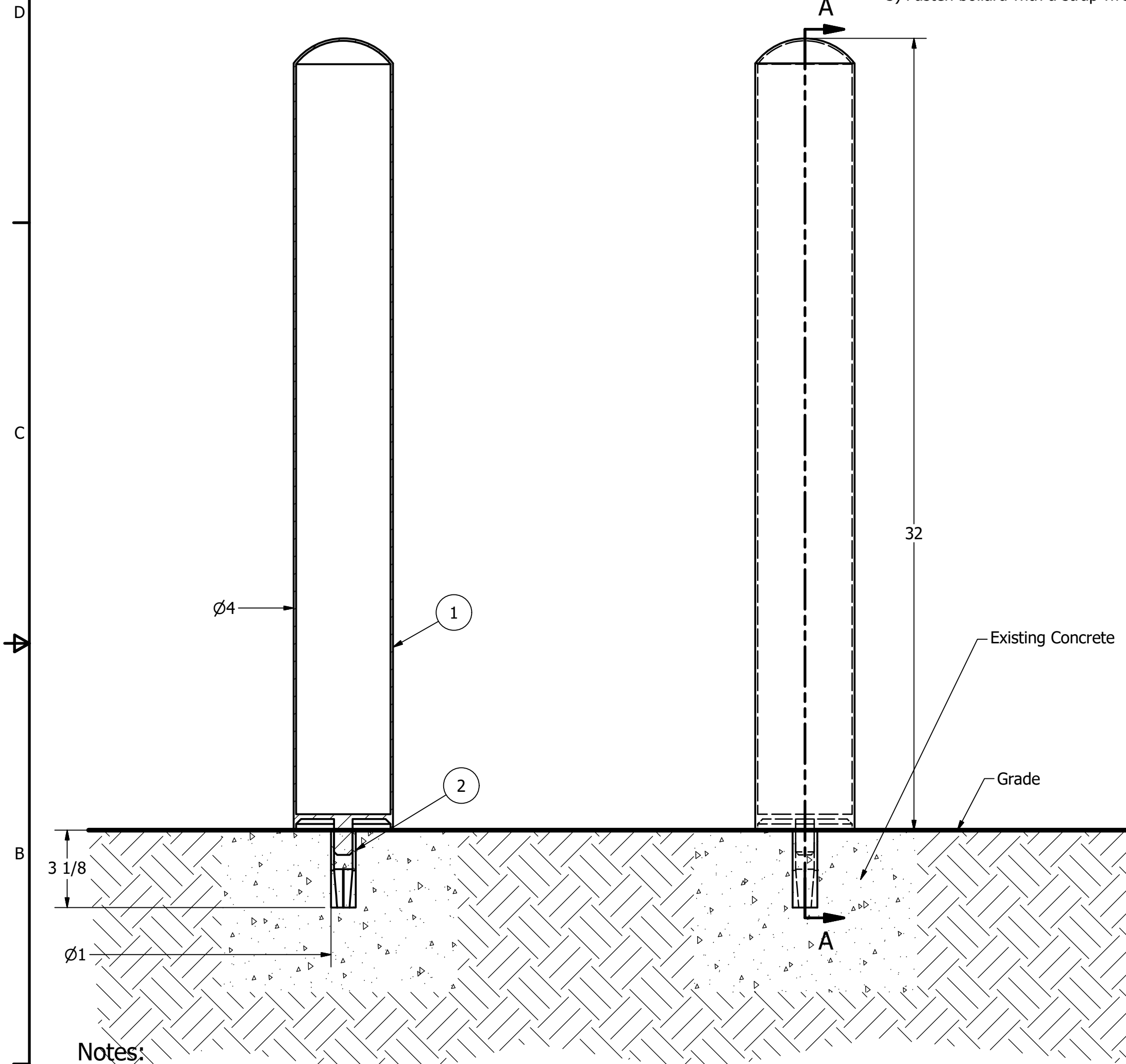


Asset Protection Bollard R-7187

- Drop-in Anchor Installation:
- 1) Use a carbide tip drill bit to drill 1" x 3-1/8" hole (dia. x depth)
 - 2) Clean drill hole of debris
 - 3) Insert anchor into drill hole
 - 4) Use hammer and proper setting tool to drive plug down
 - 5) Fasten bollard with a strap wrench



General Description:

The R-7187 Bolt Down Bollard is easy to install and features a 32" tall body with no exposed hardware. Its smooth and streamlined appearance reduces tripping hazards and obstruction in areas with regular foot traffic. R-7187 bollards are made from high-quality 316-grade stainless steel to withstand weathering and corrosion. Use strap wrench to secure bollard to drop-in anchor.

For more information on bollard post installation, please visit: www.reliance-foundry.com/bollard/installation-bollards

Specifications:

Height: 32"

Diameter: 4"

Weight: 14 lbs

Material: Stainless Steel AISI 316

Finish Options:

- Polished with a satin surface finish
 - Available polyester Powdercoated option
- See Reliance Foundry's standard color options at www.reliance-foundry.com/bollard/colors-bollards

Notes:

- Embedment details are for reference illustration only. Minimum foundation sizes depend on local soil conditions, weather conditions and engineering requirements.
- Bollard is provided as shown with parts listed below. Concrete foundation and/or installation not provided by Reliance Foundry.
- This drawing is not drawn to scale. Dimensions provided herein are for reference only. Please consult Reliance Foundry sales professionals if any dimension is critical to your particular installation.
- Reliance Foundry reserves the right to amend design and specifications without prior notice for product improvement.

RELIANCE FOUNDRY
SINCE 1925

Unit 207, 6450 - 148 Street, Surrey, BC V3S 7G7, Canada
1-888-735-5680 info@reliance-foundry.com
www.reliance-foundry.com

TITLE

Asset Protection Bollard R-7187

SIZE
C

DWG NO
R7187

REV
C

NOT TO SCALE

SHEET 1 OF 1

PARTS LIST					
ITEM	QTY	PART NUMBER	DESCRIPTION	MATERIAL	WEIGHT
1	1	R7187C	R7187 Asset Protection Bollard Cover	Stainless Steel	14 lbs
2	1	Drop-in Concrete Insert 3/4"	Drop-in Concrete Insert 3/4" - requires 1" x 3 1/8" hole (dia. x depth)	Steel Plated	1/2 lbs

COPYRIGHT RESERVED THIS PLAN DRAWING AND DESIGN ARE, AND AT ALL TIMES REMAIN, THE EXCLUSIVE PROPERTY OF RELIANCE FOUNDRY CO. LTD.