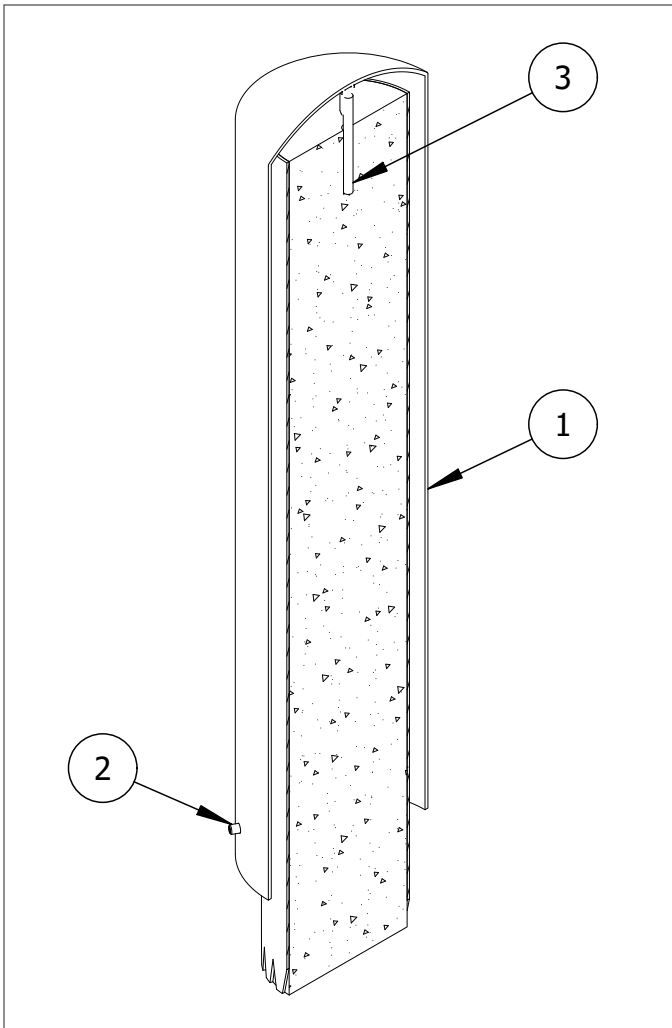


Stainless Steel Bollard Cover Installation

Top Hanger (Adhesive)

Bollards shown in the diagrams may not be the same model as the bollards shipped in this order. This does not affect the integrity of the installation.



To protect the finish, keep bollard covers in packaging until exact moment of installation.

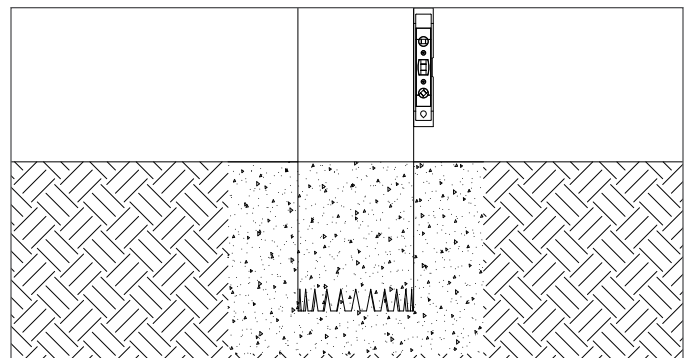


Handle with care to avoid scratching or damaging bollard cover surfaces as abrasions will lead to rust.

Before Installation

STEP 1: Examine the pre-installed pipe bollard for signs of damage. Any rust should be removed, and abrasions should be covered as soon as possible. If the damage is beyond repair, a new pipe bollard may need to be installed.

STEP 2: Hold a level vertically against the side of the pipe bollard and ensure that it is plumb. *Note: Any damage or tilting of the pipe bollard can affect the performance of the bollard cover.*



**Please refer to the adhesive manufacturer's MSDS (included in shipment) before using*

Parts List

#	PART	QTY
1	Stainless Steel Bollard Cover	1
2	Hexagon Socket Set Screw	3
3	Top Hanger	1

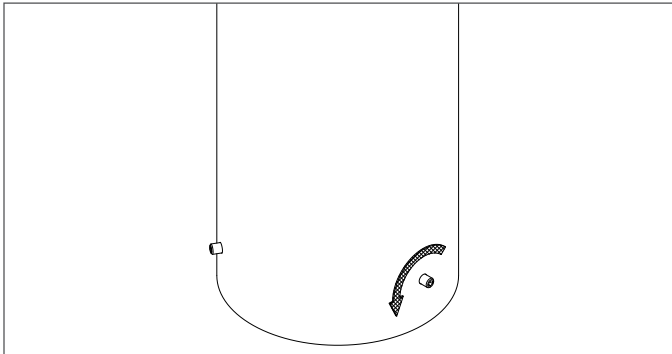
Installation Equipment

3/16" Hex Key	Hammer Drill or Rotary Hammer
Level	1/2" Masonry Drill Bit
Chalk	Caulking Gun
Vacuum	Adhesive Anchoring System* (included)

Stainless Steel Bollard Cover Installation

Top Hanger (Adhesive)

STEP 6

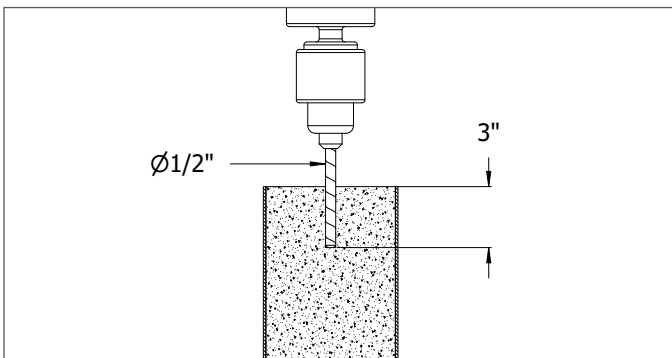


STEP 3: Brush or wipe the surface of the pipe bollard. Debris can offset measurements and the placement of the bollard cover.

STEP 4: Mark the placement of the bollard cover. Use chalk to mark the center point on the concrete inside the pipe bollard.

STEP 5: Keep the bollard cover in its protective packaging and place near the installation site. When ready to install, remove the protective packaging.

STEP 9



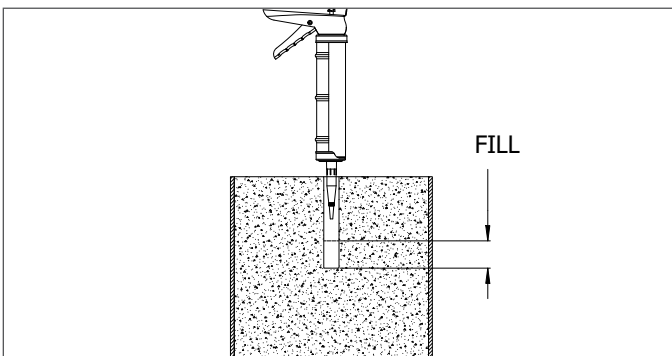
STEP 6: Three set screws are pre-installed in the bottom holes of the bollard cover. Partly unscrew them to allow room for the pipe bollard to fit inside.

Drill the Hole

STEP 7: Tap a pilot hole in the center of the hole marking. This will prevent the rotary hammer from drifting while boring the hole.

STEP 8: Set the depth control on the hammer drill (or rotary hammer) to 3".

STEP 11



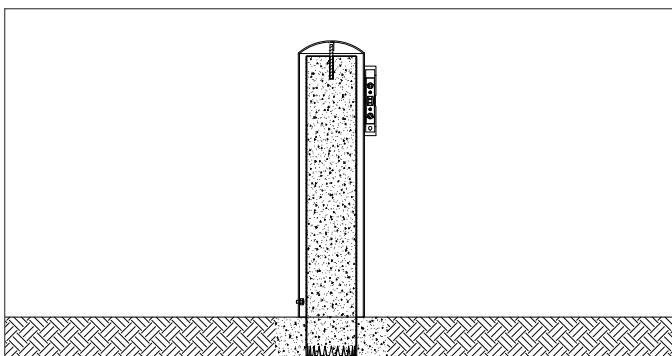
STEP 9: Drill a hole that has a 1/2" diameter and 3" depth. Ensure the drill is level. Drill on high speed, using the hammer function if available.

STEP 10: Clear the hole of all debris using a vacuum. Use a brush to remove any remaining loose particles.

Install the Bollard Cover

STEP 11: Fill the hole with adhesive. Using the caulking gun, dispense the adhesive from the bottom up until the hole is one-half full. To prevent air pockets from forming, withdraw the mixing nozzle slowly.

STEP 12



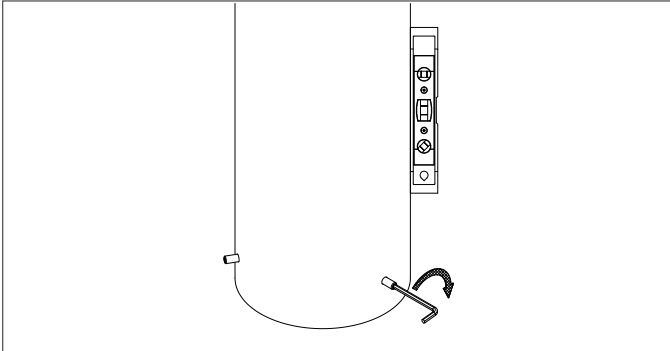
STEP 12: Lower the bollard cover over the pipe bollard. Push the top hanger into the hole while turning to ensure positive adhesion. Use a level to ensure that the bollard cover is plumb and make any necessary adjustments.

Note: A minimum of 45 minutes at 68°F is required for the anchoring system to set. Do not disturb until adhesive has fully cured.

Stainless Steel Bollard Cover Installation

Top Hanger (Adhesive)

STEP 13



Secure the Bollard Cover

STEP 13: Tighten the set screws at the bottom of the bollard cover using equal torque. Use a level throughout the process to ensure that the bollard cover is plumb. Move from screw to screw, adjusting the set screws to achieve a plumb cover.

Clean the Bollard Cover

STEP 14: Use a cloth to clean off any dust or debris from the surface of the bollard cover.



Inspect the installation. Abrasions should be covered as soon as possible. For damage repair or other servicing needs, please contact Reliance Foundry's sales department.