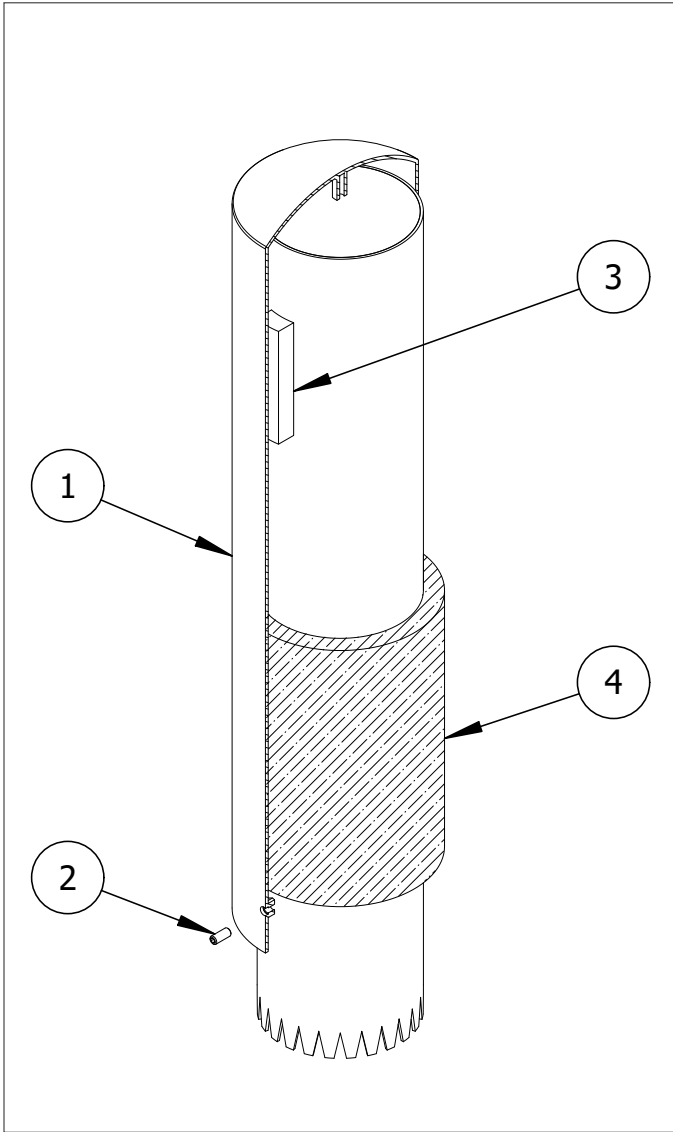


Stainless Steel Bollard Cover Installation

Spray Foam

Bollards shown in the diagrams may not be the same model as the bollards shipped in this order. This does not affect the integrity of the installation.



To protect the finish, keep bollard covers in packaging until exact moment of installation.

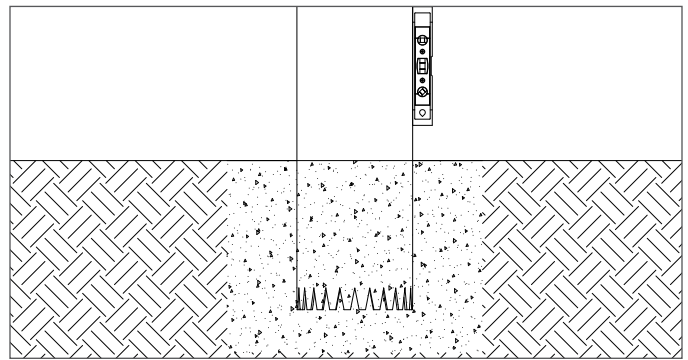


Handle with care to avoid scratching or damaging bollard cover surfaces as abrasions will lead to rust.

Before Installation

STEP 1: Examine the pre-installed pipe bollard for signs of damage. Any rust should be removed, and abrasions should be covered as soon as possible. If the damage is beyond repair, a new pipe bollard may need to be installed.

STEP 2: Hold a level vertically against the side of the pipe bollard and ensure that it is plumb. *Note: Any damage or tilting of the pipe bollard can affect the performance of the bollard cover.*



**Please refer to the adhesive manufacturer's MSDS before using.*

Parts List

#	PART	QTY
1	Stainless Steel Bollard Cover	1
2	Hexagon Socket Set Screw	3
3	Adhesive Foam Strip	3
4	Spray Foam (adhesive)*	1

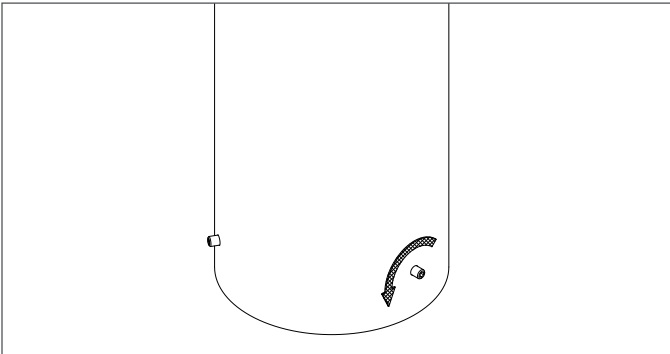
Installation Equipment

3/16" Hex Key	Measuring Tape
Level	Putty knife

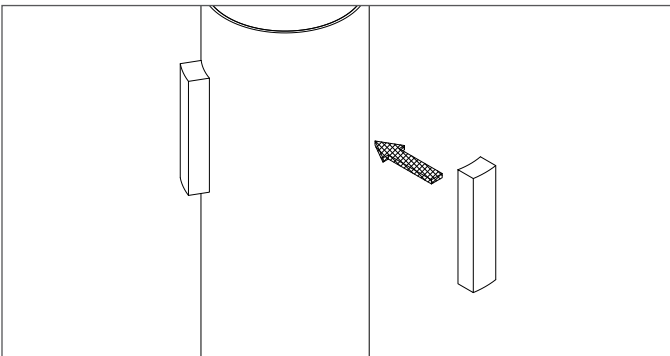
Stainless Steel Bollard Cover Installation

Spray Foam

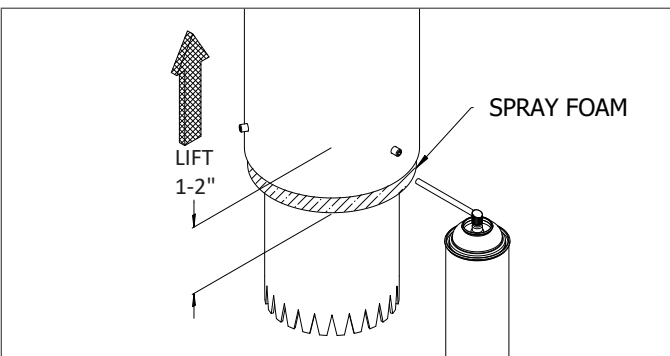
STEP 5



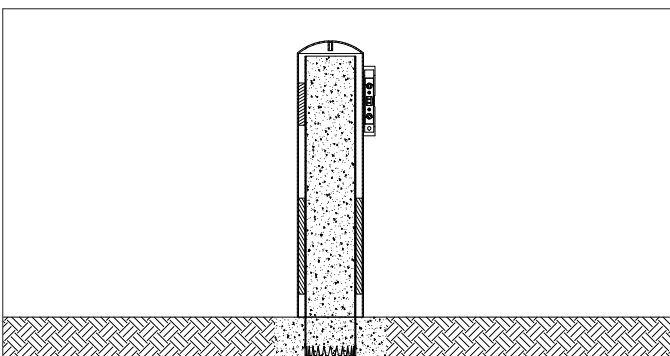
STEP 6



STEP 8



STEP 10



STEP 3: Brush or wipe the surface of the pipe bollard. Debris can offset measurements and the placement of the bollard cover. Dry the pipe bollard as moisture can affect the integrity of the adhesive foam strips when applied later.

STEP 4: Keep the bollard cover in its protective packaging and place near the installation site. When ready to install, remove the protective packaging.

STEP 5: Three set screws are pre-installed in the bottom holes of the bollard cover. Partly unscrew them to allow room for the pipe bollard to fit inside.

Secure the Bollard Cover

STEP 6: Apply the three adhesive foam strips to the top portion of the pipe bollard. Place the strips evenly spaced apart. This compressible foam adds stability by filling up the space between the pipe bollard and bollard cover.

STEP 7: Slide the bollard cover over the pipe bollard and hold it at 1–2" above surface grade.

STEP 8: With the bollard cover held up at 1–2" above surface grade, insert the spray foam nozzle into the space between the pipe bollard and bollard cover. Carefully dispense the spray foam evenly around the pipe bollard. *Note: The bollard cover must be held up over the pipe bollard as the spray foam is applied. To prevent accidents and injuries, have a second person help with this step or ensure that the proper resources are available to set into place.*

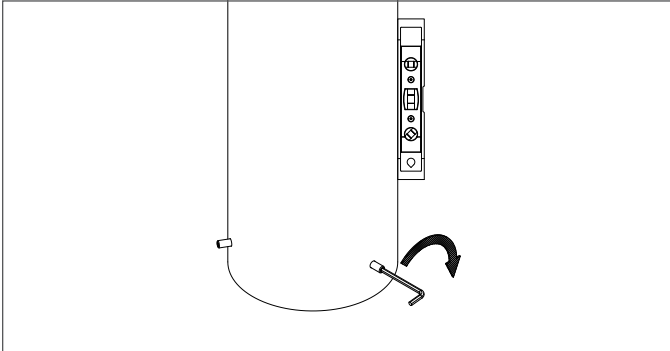
STEP 9: Lower the bollard cover all the way down and ensure it is centered over the pipe bollard.

STEP 10: Immediately remove any excess foam with a putty knife. Press a level vertically against the bollard cover and ensure that it is plumb. *Note: A minimum of 10 minutes at 70°F is required for the spray foam to set. Do not disturb until it has fully cured.*

Stainless Steel Bollard Cover Installation

Spray Foam

STEP 11



STEP 11: Tighten the set screws at the bottom of the bollard cover using equal torque. Use a level throughout the process to ensure that the bollard cover is plumb. Move from screw to screw, adjusting the set screws to achieve a plumb cover.

Clean the Bollard Cover

STEP 12: Use a cloth to clean off any residue, dust, or debris from the surface of the bollard cover.



Inspect the installation. Abrasions should be covered as soon as possible. For damage repair or other servicing needs, please contact Reliance Foundry's sales department.