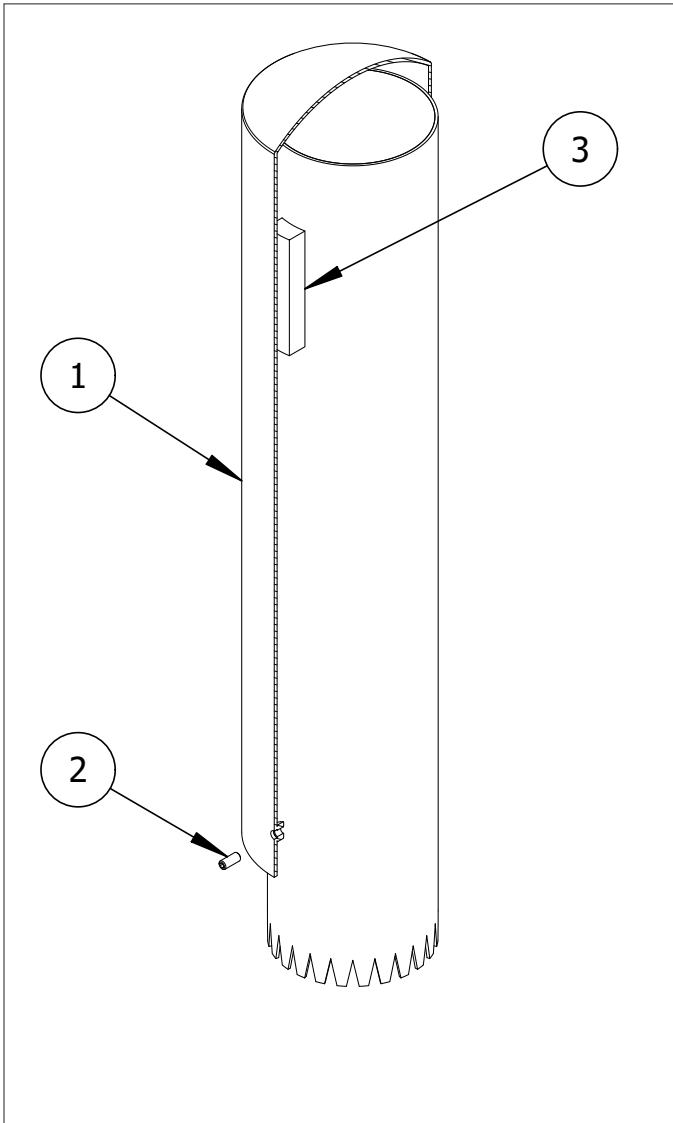




Stainless Steel Bollard Cover Installation

Set Screws

Bollards shown in the diagrams may not be the same model as the bollards shipped in this order. This does not affect the integrity of the installation.

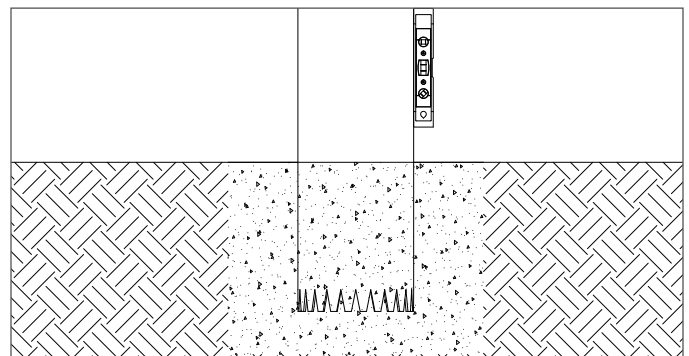


-  To protect the finish, keep bollard covers in packaging until exact moment of installation.
-  Handle with care to avoid scratching or damaging bollard cover surfaces as abrasions will lead to rust.

Before Installation

STEP 1: Examine the pre-installed pipe bollard for signs of damage. Any rust should be removed, and abrasions should be covered as soon as possible. If the damage is beyond repair, a new pipe bollard may need to be installed.

STEP 2: Hold a level vertically against the side of the pipe bollard and ensure that it is plumb. *Note: Any damage or tilting of the pipe bollard can affect the performance of the bollard cover.*



Parts List

#	PART	QTY
1	Stainless Steel Bollard Cover	1
2	Hexagon Socket Set Screw	3
3	Adhesive Foam Strip	3

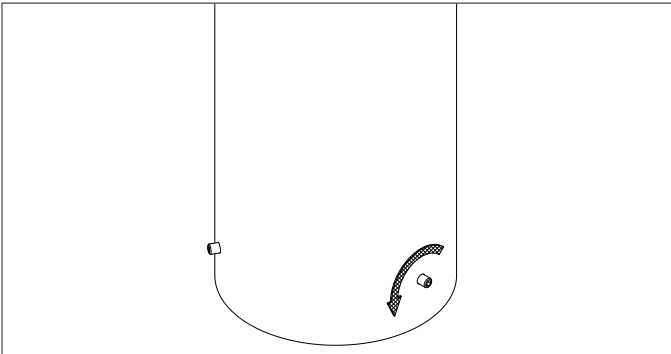
Installation Equipment

3/16" Hex Key
Level
Measuring Tape

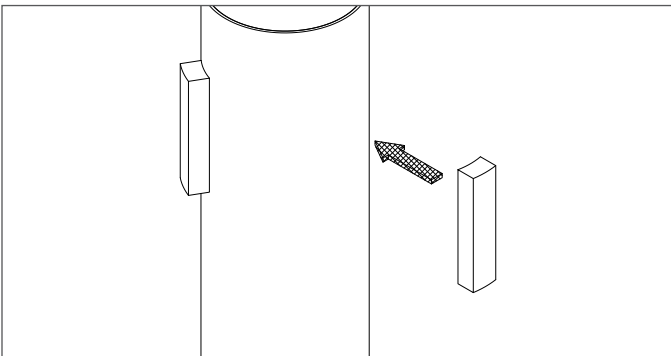
Stainless Steel Bollard Cover Installation

Set Screws

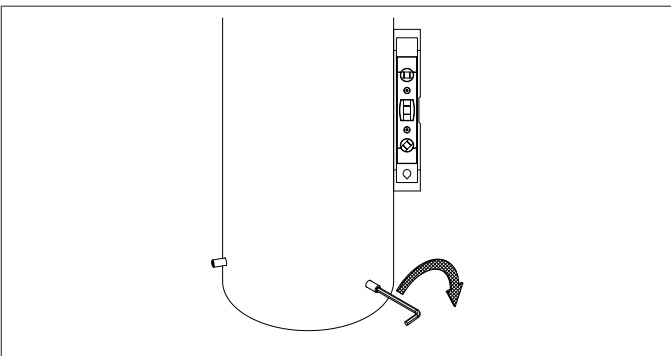
STEP 5



STEP 6



STEP 8



STEP 3: Brush or wipe the surface of the pipe bollard. Debris can offset measurements and the placement of the bollard cover. Dry the pipe bollard as moisture can affect the integrity of the adhesive foam strips when applied later.

STEP 4: Keep the bollard cover in its protective packaging and place near the installation site. When ready to install, remove the protective packaging.

STEP 5: Three set screws are pre-installed in the bottom holes of the bollard cover. Partly unscrew them to allow room for the pipe bollard to fit inside.

Secure the Bollard Cover

STEP 6: Apply the three adhesive foam strips to the top portion of the pipe bollard. Place the strips evenly spaced apart. This compressible foam adds stability by filling up the space between the pipe bollard and bollard cover.

STEP 7: Carefully lower the bollard cover over the pipe bollard.

STEP 8: Tighten the set screws at the bottom of the bollard cover using equal torque. Use a level throughout the process to ensure that the bollard cover is plumb. Move from screw to screw, adjusting the set screws to achieve a plumb cover.

Clean the Bollard Cover

STEP 9: Use a cloth to clean off any dust or debris from the surface of the bollard cover.



Inspect the installation. Abrasions should be covered as soon as possible. For damage repair or other servicing needs, please contact Reliance Foundry's sales department.