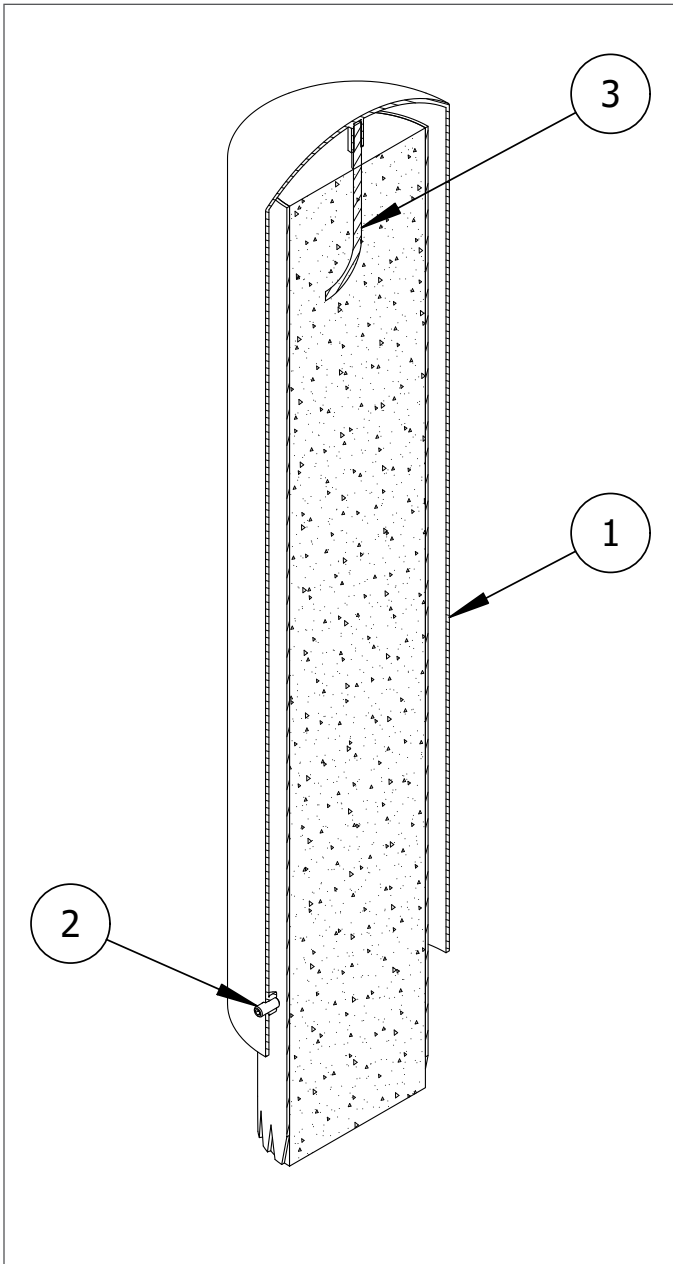


# Stainless Steel Bollard Cover Installation



## J Hanger

Bollards shown in the diagrams may not be the same model as the bollards shipped in this order. This does not affect the integrity of the installation.



### Installation Equipment

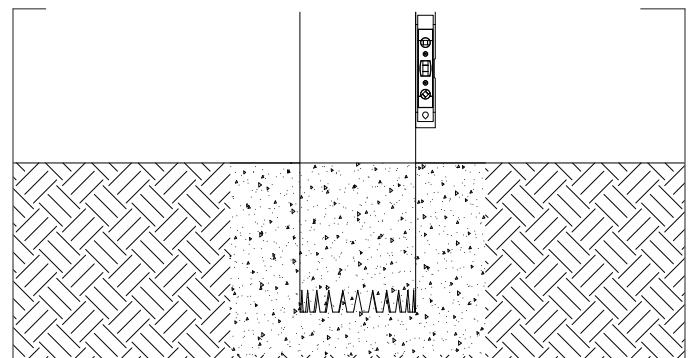
3/16" Hex Key
Shovel
Level

-  To protect the finish, keep bollard covers in packaging until exact moment of installation.
-  Handle with care to avoid scratching or damaging bollard cover surfaces as abrasions will lead to rust.

### Before Installation

**STEP 1:** Examine the pre-installed pipe bollard for signs of damage. Any rust should be removed, and abrasions should be covered as soon as possible. If the damage is beyond repair, a new pipe bollard may need to be installed.

**STEP 2:** Hold a level vertically against the side of the pipe bollard and ensure that it is plumb. *Note: Any damage or tilting of the pipe bollard can affect the performance of the bollard cover.*



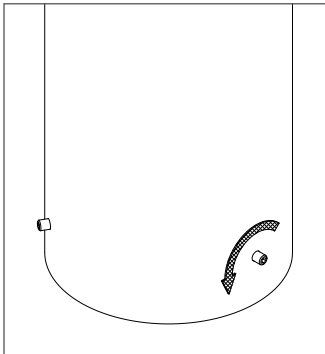
### Parts List

#	PART	QTY
1	Stainless Steel Bollard Cover	1
2	Hexagon Socket Set Screw	3
3	J Hanger	1

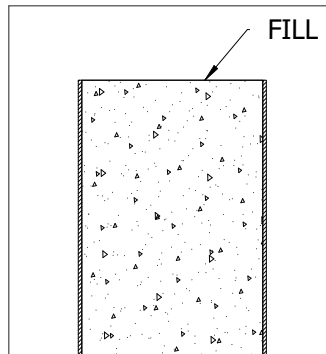
# Stainless Steel Bollard Cover Installation

## J Hanger

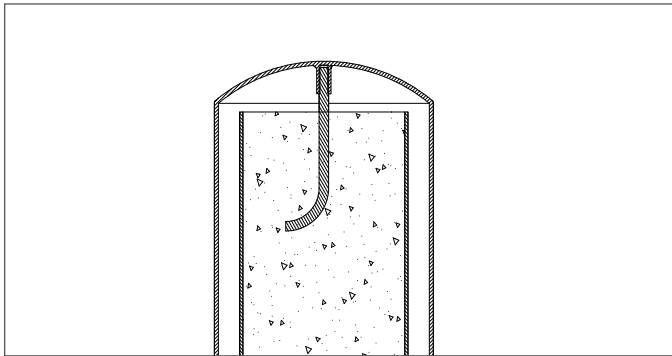
STEP 5



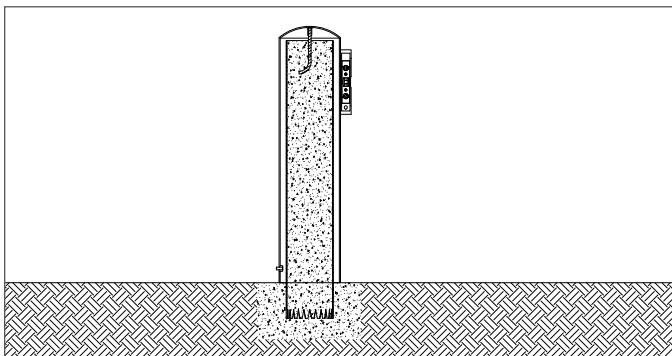
STEP 7



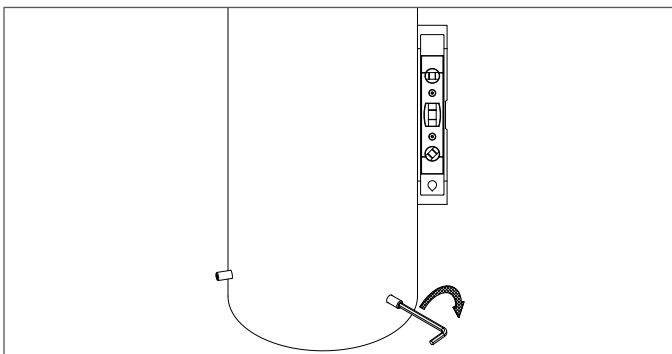
STEP 8



STEP 9



STEP 10



**STEP 3:** Brush or wipe the surface of the pipe bollard. Debris can offset measurements and the placement of the bollard cover.

**STEP 4:** Keep the bollard cover in its protective packaging and place near the installation site. When ready to install, remove the protective packaging.

**STEP 5:** Three set screws are pre-installed in the bottom holes of the bollard cover. Partly unscrew them to allow room for the pipe bollard to fit inside.

### Install the Bollard Cover

**STEP 6:** Mix the concrete. Ensure that the proper ratio of water and concrete mix is used. The concrete should have a similar texture to moldable clay.

**STEP 7:** Using a shovel, fill the pipe bollard with concrete. Create a flat surface at the top of the pipe bollard.

**STEP 8:** Lower the bollard cover over the pipe bollard. Push the J hanger into the wet concrete through the center of the pipe bollard.

**STEP 9:** Use a level to ensure that the bollard cover is plumb and make any necessary adjustments.

### Secure the Bollard Cover

**STEP 10:** Tighten the set screws at the bottom of the bollard cover using equal torque. Use a level throughout the process to ensure that the bollard cover is plumb. Move from screw to screw, adjusting the set screws to achieve a plumb cover.

### Clean the Bollard Cover

**STEP 11:** Use a cloth to clean off any residue, dust, or debris from the surface of the bollard cover.



**Inspect the installation.** Abrasions should be covered as soon as possible. For damage repair or other servicing needs, please contact Reliance Foundry's sales department.