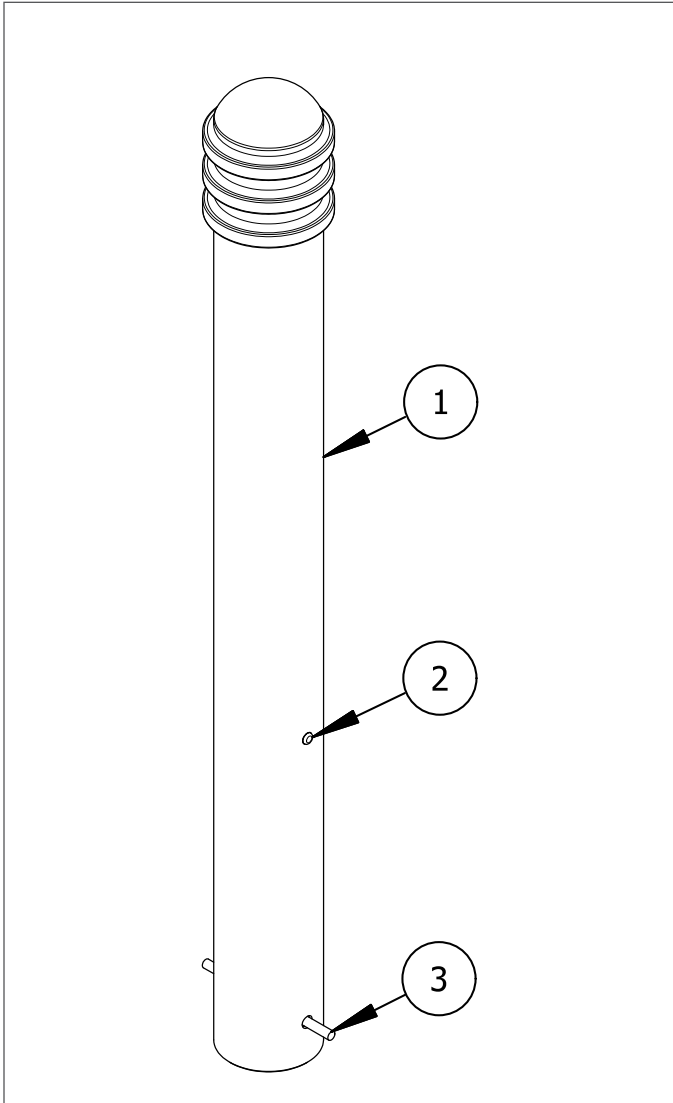






Decorative Bollard Installation

Embedded Mounting

Bollards shown in the diagrams may not be the same model as the bollards shipped in this order. This does not affect the integrity of the installation.



-  To protect the finish, keep bollards in original packaging until exact moment of installation.
-  Handle with care to avoid scratching or damaging bollard surfaces as abrasions will lead to rust.
-  Once scratched, bollards cannot be repaired to original form without re-finishing the entire surface.
-  Consider local soil conditions before proceeding with bollard installation.

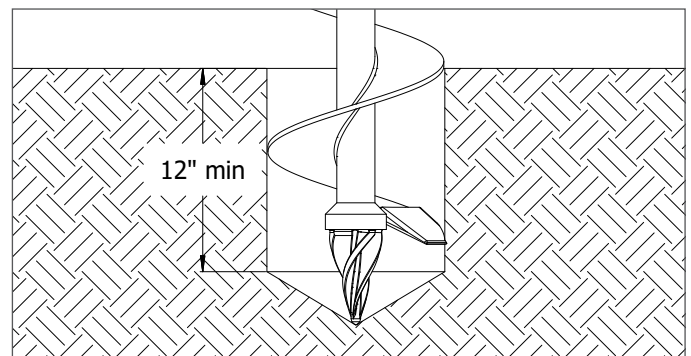
Before Installation

STEP 1: Study the site plans and mark the intended location of each bollard on the plan.

STEP 2: Always check for hazards such as water pipes, gas lines, and underground wiring before digging.

STEP 3: Please consult your local Building Code Department to determine the recommended depth below the frost line for digging in your area. Choose a minimum of this or 12", whichever is greater. The new concrete footing must reach this depth. The diameter of the hole differs based on the bollard model. Refer to product drawings to determine specific measurements.

STEP 4: Center the auger on the installation mark and bore a hole to the require depth and diameter.



Parts List

#	PART	QTY
1	Steel Bollard, Embedded Mount	1
2	Plastic Plug	1
3	Steel Rebar	1

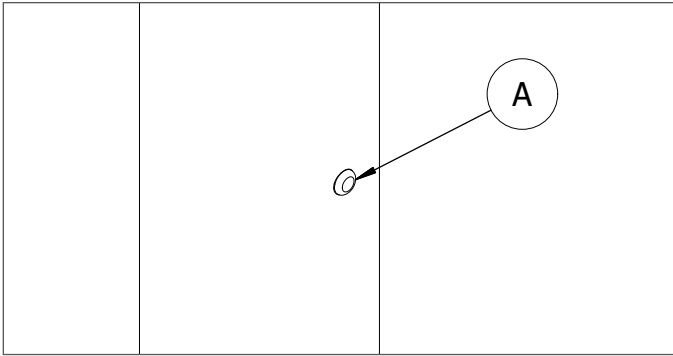
Installation Equipment

Auger	Chalk/Marker
Dirt Tamper	Level
Measuring Tape	

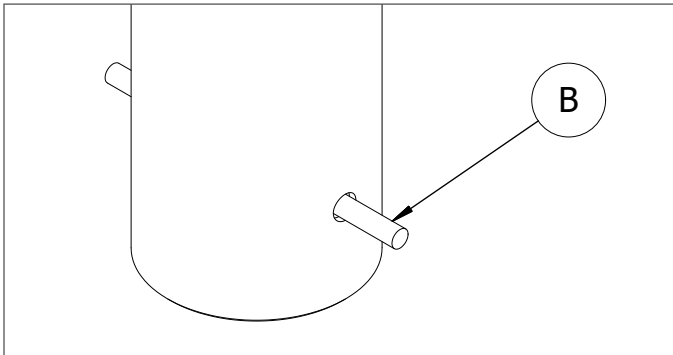
Decorative Bollard Installation

Embedded Mounting

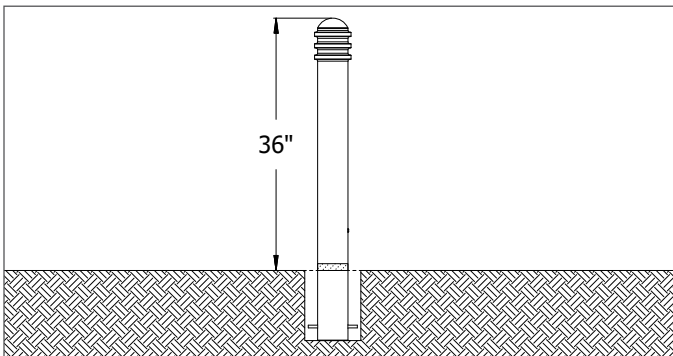
STEP 9



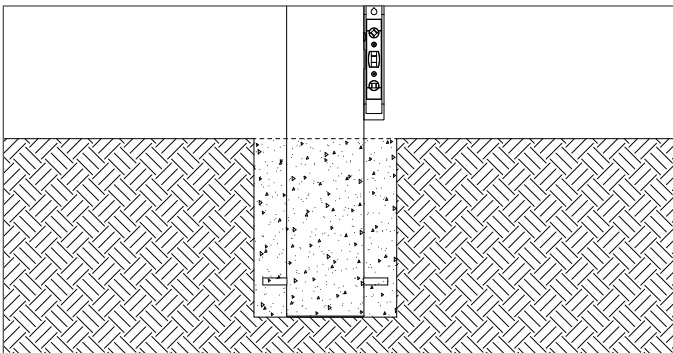
STEP 10



STEP 11



STEP 12



STEP 5: Ensure the area is properly formed to create a perimeter that will hold wet concrete. Use a dirt tamper* to compact the soil below the intended surface.

STEP 6: Keep the bollard in its protective packaging and carefully place near the installation position.

Pour the Concrete

STEP 7: Mix the concrete. Check that the proper ratio of water and concrete mix is used—the concrete should have a similar texture to moldable clay.

STEP 8: When ready to install the bollard, remove the protective packaging.

STEP 9: Do a visual inspection of the bollard and ensure that the plastic plug **(A)** is intact.

STEP 10: Insert the steel rebar **(B)** into the bottom holes of the bollard. This will anchor the bollard in the concrete.

STEP 11: Measure 36" from the top of the bollard and mark with masking tape. This indicates the height above surface grade. Lower the bollard into the designated location until it reaches the masking tape.

STEP 12: Pour the concrete evenly. Hold a level against the side of the bollard and ensure that it remains plumb.
Note: Once the concrete has cured, there will be no way to make any adjustments.



Inspect the installation. Abrasions should be covered as soon as possible. For damage repair or other servicing needs, please contact Reliance Foundry's sales department.

*Dirt tamping is not required if working on undisturbed soil.