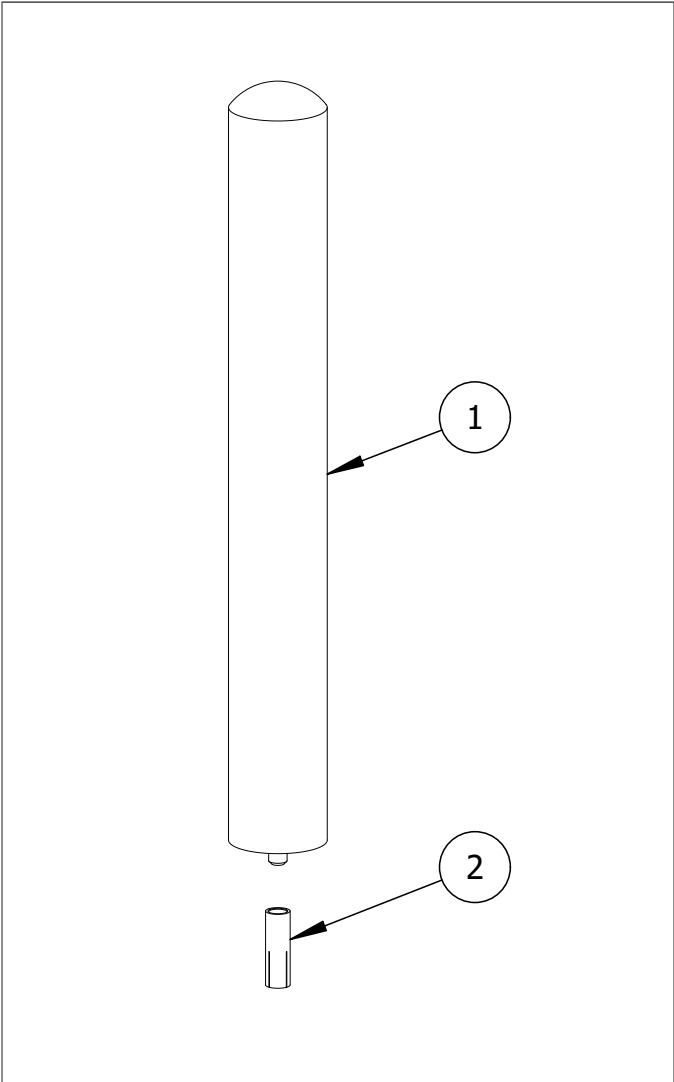





Bolt-Down Bollard Installation


R-7186/R-7187



 To protect the finish, keep bollards in original packaging until exact moment of installation.

 Handle with care to avoid scratching or damaging bollard surfaces.

 Once scratched, bollards cannot be repaired to original form without re-finishing the entire surface.

 Take special care to protect the thread at the bottom of the bollard.

Parts List

#	PART	QTY
1	Asset Protection Bollard	1
2	Drop-In Concrete Insert 3/4"	1

Installation Equipment

Measuring Tape	Vacuum
Strap Wrench	Chalk
Broom/Pressure Washer	Level
1" Masonry Drill Bit	Hammer
3/4" Insert Setting Tool (or equivalent)	

Before Installation

STEP 1: Always check for hazards such as water pipes, gas lines, and underground wiring before drilling.

STEP 2: Use a broom or pressure washer to clean the concrete surface prior to bollard installation.

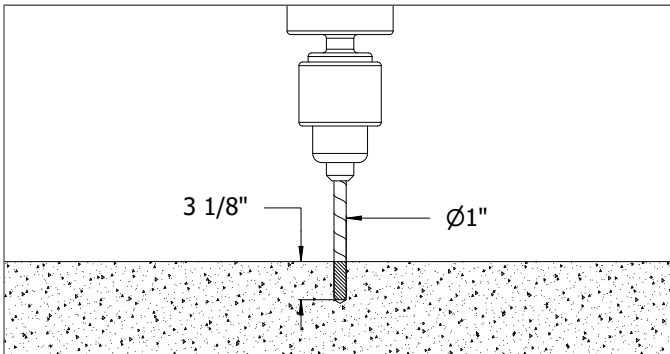
STEP 3: Study the site plans to locate and mark the precise center point of each bollard. For secure installation, ensure there is a minimum radius* of solid concrete around each mark.

* Concrete insert manufacturers such as www.ucanfast.com recommend a radius of 9"

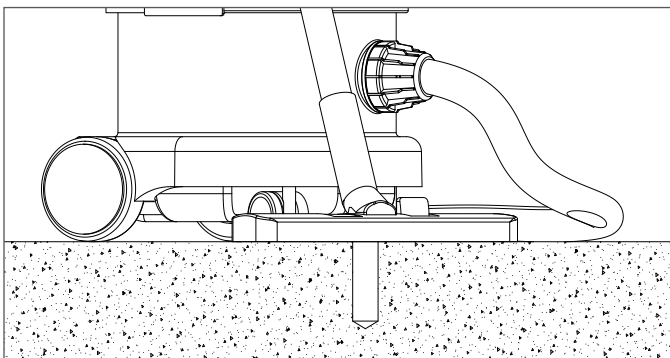
Bolt-Down Bollard Installation

R-7186/R-7187

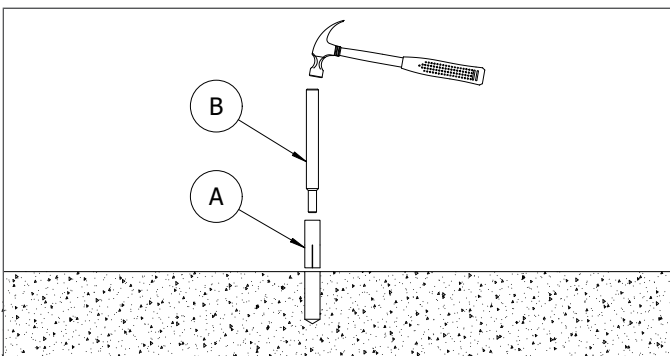
STEP 6



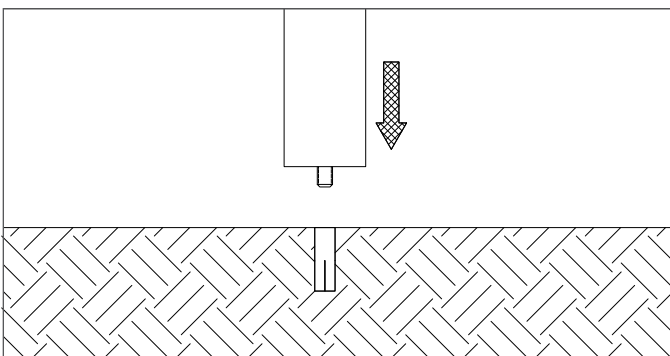
STEP 7



STEP 8



STEP 10



Drill the Hole

STEP 4: Tap a pilot divot hole in the center of each mark.

STEP 5: Set the depth control on the hammer drill (or rotary hammer) to 3-1/8". If depth control is not available, mark 3-1/8" on the masonry bit.

STEP 6: Drill a hole that has a 1" diameter and 3-1/8" depth. Drill on high speed, using the hammer function if available.

Secure the Anchor

STEP 7: Clear the hole of all debris and/or standing water using the vacuum. Use a brush to remove any remaining loose particles.

STEP 8: Tap the drop-in insert (A) into the hole with the slotted end facing down, and tap it down until its top sits flush with the concrete surface. Insert a setting tool (B) into the threaded hole, then hammer down. This will cause the internal expansion plug to set the concrete insert in place. *Note: If a proper setting tool is not available, an equivalent flat-end punch can be used.*

Secure the Bollard

STEP 9: Keep the bollard in its protective packaging. Carefully place the bollard near the installation position. When ready to install, remove the protective packaging.

STEP 10: Set the bollard upright and center it over the concrete insert.

STEP 11: Thread the bolt at the bottom of the bollard into the concrete insert. Use a strap wrench near the bollard base to tighten.



Inspect the installation. Abrasions should be covered as soon as possible. For damage repair or other servicing needs, please contact Reliance Foundry's sales department.