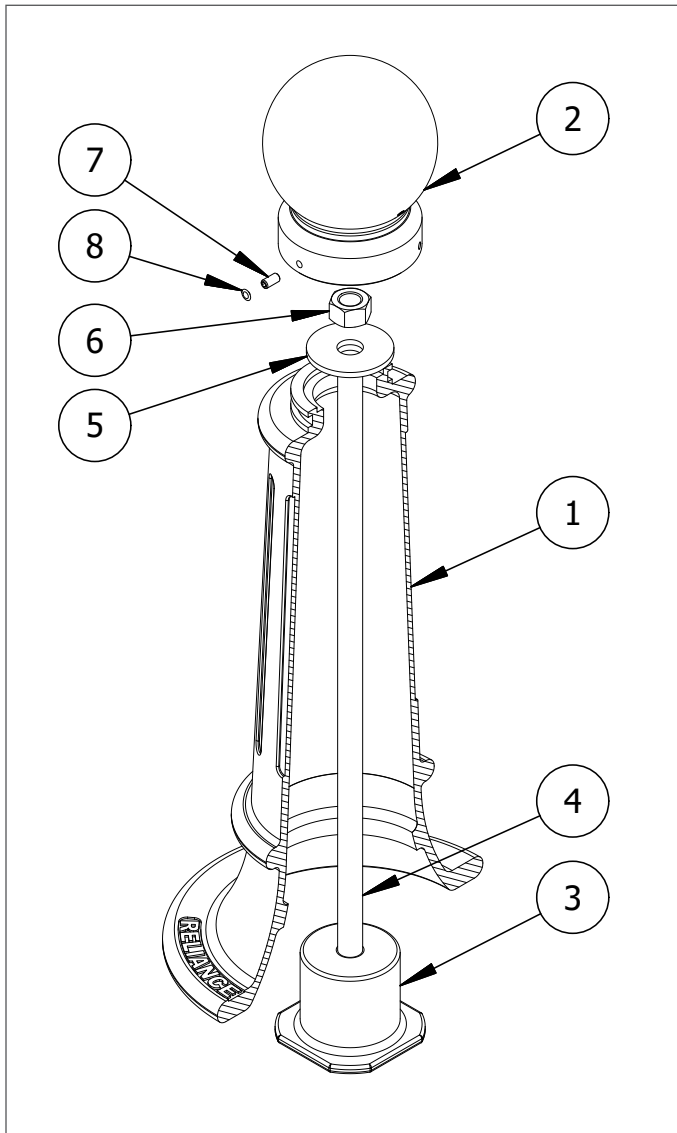


Decorative Bollard Installation

Anchor Casting in New Concrete

Bollards shown in the diagrams may not be the same model as the bollards shipped in this order. This does not affect the integrity of the installation.







Parts List

#	PART	QTY
1	Bollard Base	1
2	Bollard Cap	1
3	Anchor Casting 1" (includes a plug covering top hole)	1
4	Threaded Bar 1"	1
5	Washer 1"	1
6	Hex Nut 1"	1
7	Hexagon Socket Set Screw	3
8	Plastic Plug	3

Installation Equipment

3/16" Hex Key	Duct Tape
1-1/2" Wrench	Measuring Tape
Dirt Tamper	

- 
To protect the finish, keep bollards in original packaging until exact moment of installation.
- 
Handle with care to avoid scratching or damaging bollard surfaces as abrasions will lead to rust.
- 
Once scratched, bollards cannot be repaired to original form without re-finishing the entire surface.
- 
Consider local soil conditions before proceeding with bollard installation.

Before Installation

STEP 1: Study the site plans and mark the intended location of each bollard on the plan.

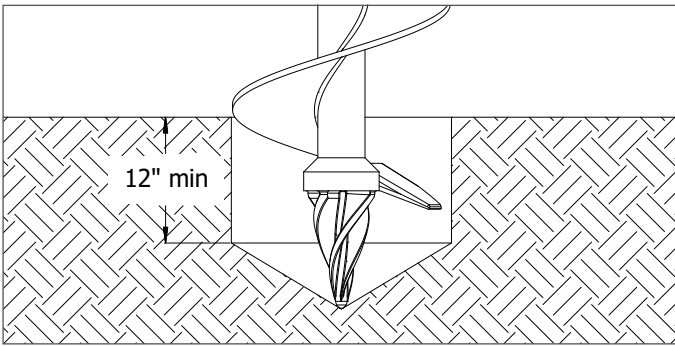
STEP 2: Always check for hazards such as water pipes, gas lines, and underground wiring before digging.

STEP 3: Please consult your local Building Code Department to determine the recommended depth below the frost line for digging in your area. Choose a minimum of this or 12", whichever is greater. The new concrete footing must reach this depth. The diameter of the hole differs based on the bollard model. Refer to product drawings to determine specific measurements.

Decorative Bollard Installation

Anchor Casting in New Concrete

STEP 4

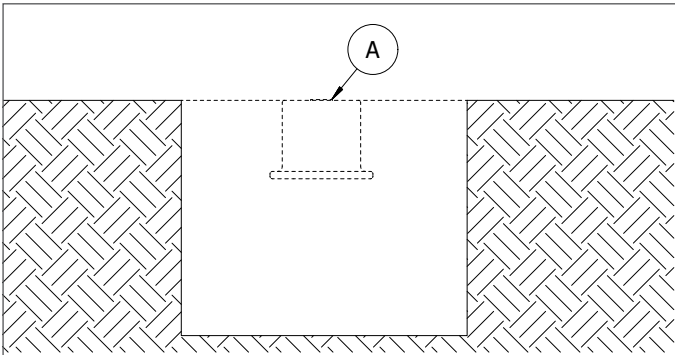


STEP 4: Center the auger on the installation mark and bore a hole to the required depth and diameter.

STEP 5: Ensure the area is properly formed to create a perimeter that will hold wet concrete. Use a dirt tamper* to compact the soil below.

STEP 6: In extremely dirty/dusty areas, cover the bottom hole of the anchor casting with duct tape. The top hole is already covered with the plug (A). Place the anchor casting in designated location and ensure that its top will be flush with the finished surface of the concrete grade (anchor casting is 4" high).

STEP 6

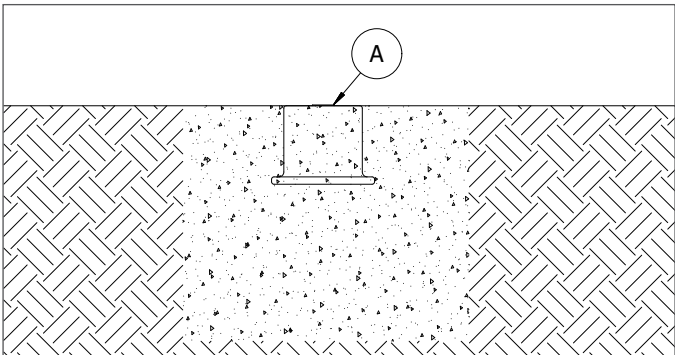


Pour the Concrete

STEP 7: Mix the concrete. Check that the proper ratio of water and concrete mix is used—the concrete should have a similar texture to moldable clay.

STEP 8: Pour the concrete evenly, ensuring surface is level, and avoid disrupting the anchor casting.

STEP 8



STEP 9: Allow the concrete to cure for a minimum of 2–3 days. *Note: Moisture in the environment and cool temperatures can significantly slow the process.*

Secure the Bollard

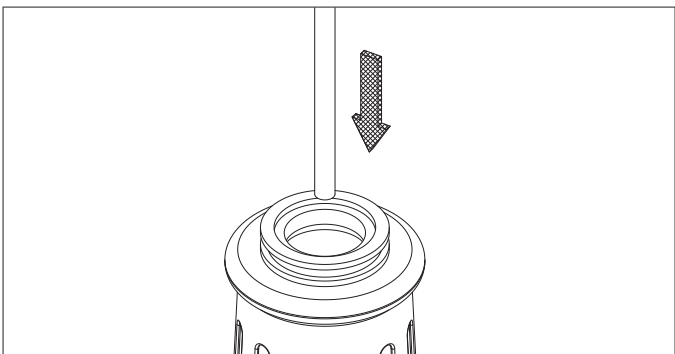
STEP 10: Keep the bollard in its protective packaging. After ensuring the concrete surface has fully cured, carefully place the bollard beside the anchor casting.

STEP 11: When ready to install, remove the bollard's protective packaging. Remove the plug (A) from the top hole of the anchor casting.

STEP 12: Set the bollard base upright and maneuver it so the center lines up with threaded hole in the anchor casting.

STEP 13: Lower the threaded rod through the bollard base.

STEP 13

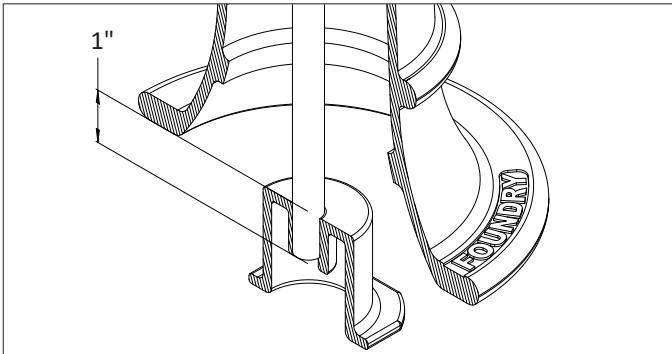


*Dirt tamping is not required if working on undisturbed soil.

Decorative Bollard Installation

Anchor Casting in New Concrete

STEP 14



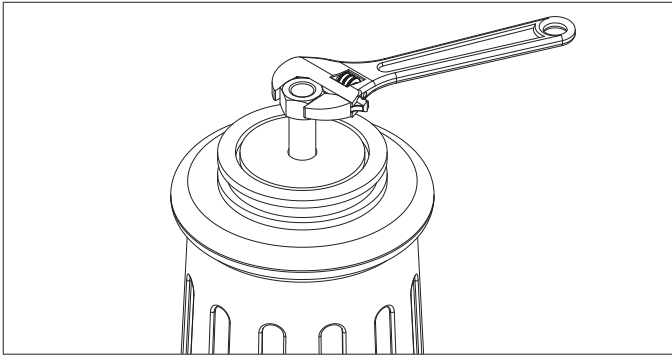
STEP 14: Continue to thread the rod into the anchor casting. Tighten** the rod by hand until it is secure.

STEP 15: Place the washer over the threaded rod so that it rests on top of the shaft of the bollard. Apply the 1" nut and use a wrench to tighten until the bollard is secure.

STEP 16: Remove bollard cap from packaging. Place the cap on the top of the shaft of the bollard. Secure and align the cap to the bollard base with the three set screws.

STEP 17: Place the plastic plugs (B) over the set screws.

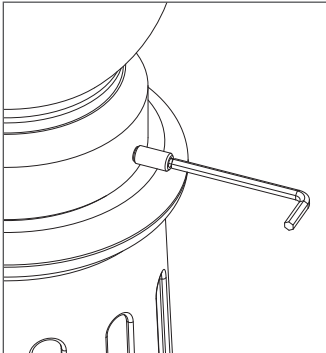
STEP 15



Inspect the installation. Abrasions should be covered as soon as possible. For damage repair or other servicing needs, please contact Reliance Foundry's sales department.

**Recommended tightness is until the threaded rod reaches a depth of approximately 1" in the anchor casting.

STEP 16



STEP 17

