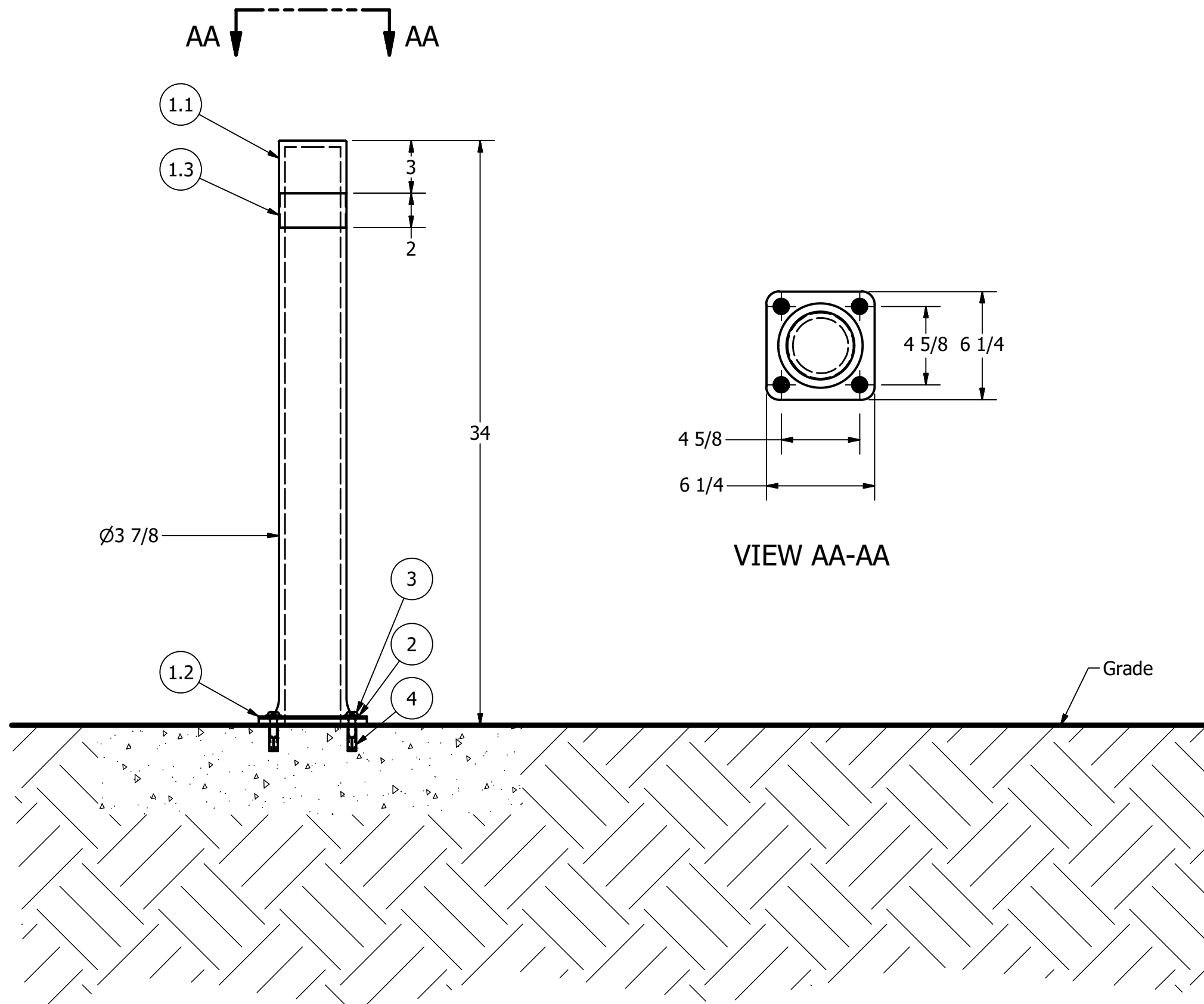


# Flexible Bollard, R-8323-FL

### Drop-in Anchor Installation:

- 1) Use a carbide tip drill bit (conforming to ANSI B 212.15) to drill 1/2" x 1 1/2" hole (dia. x depth)
- 2) Clean drill hole of debris
- 3) Insert anchor into drill hole
- 4) Use hammer and proper setting tool\* (for 3/8" Drop-In Anchor from UCAN) to drive plug down
- 5) Fasten button head screw (Maximum torque 10 ft x lbf)

\* Substitute a narrow punch tool at installer's risk



### General Description:

The R-8323-FL Flexible Bollard is composed of a versatile polyurethane plastic. Flexible bollards can bend up to 90 degrees without losing their form. Ideal for high-traffic areas to minimize damage to vehicles in the event of a collision. Features a bolt-down flange base for easy installation into existing concrete.

### Specifications:

Height: 34"

Diameter: 3 7/8"

Weight: 7 lbs

Material: polyurethane

#### Color Options:

- Black
- Red
- Green

### Notes:

- Embedment details are for reference illustration only. Minimum foundation sizes depend on local soil conditions, weather conditions and engineering requirements.
- Bike rack is provided as shown with parts listed below. Concrete foundation and/or installation not provided by Reliance Foundry.
- This drawing is not drawn to scale. Dimensions provided herein are for reference only. Please consult Reliance Foundry sales professionals if any dimension is critical to your particular installation.
- Reliance Foundry reserves the right to amend design and specifications without prior notice for product improvement.

| PARTS LIST |     |                                |  |                 |         |
|------------|-----|--------------------------------|--|-----------------|---------|
| ITEM       | QTY | PART NUMBER                    | DESCRIPTION  | MATERIAL        | WEIGHT  |
| 1          | 1   | R8323FL ASM                    | R8323FL Flexible Bollard Assembly  |                 |         |
| 1.1        | 1   | R8323FL                        | R8323FL Flexible Bollard   | Polyurethane    | 7 lbs   |
| 1.2        | 1   | R8320-1                        | R8320-1 Decorative Plate   | Stainless Steel | 5/8 lbs |
| 1.3        | 1   | R8320-2                        | Reflective Tape  |                 |         |
| 2          | 4   | Stainless Steel Washer 3/8"    | Stainless Steel Washer 3/8" OD 7/8" Thick .05"                             | Stainless Steel |         |
| 3          | 4   | Button Head Bolt 3/8" x 1 1/4" | Hexagon Socket Button Head Cap Bolt 3/8" x 1 1/4" - requires 7/32" hex key | Stainless Steel |         |
| 4          | 4   | Drop-in Concrete Insert 3/8"   | Drop-in Concrete Insert 3/8" - requires 1/2" x 1 1/2" hole (dia. x depth)  | Steel Plated    |         |

**RELIANCE FOUNDRY**  
SINCE 1925

Unit 207, 6450 - 148 Street, Surrey, BC V3S 7G7, Canada  
1-877-789-3245 info@reliance-foundry.com  
www.reliance-foundry.com

TITLE

**Flexible Bollard, R-8323-FL**

SIZE  
C

DWG NO  
R8323FL

REV  
C