

# Asset Protection Bollard R-7186

- Drop-in Anchor Installation:
- 1) Use a carbide tip drill bit to drill 1" x 3-1/8" hole (dia. x depth)
  - 2) Clean drill hole of debris
  - 3) Insert anchor into drill hole
  - 4) Use hammer and proper setting tool to drive plug down
  - 5) Fasten bollard with a strap wrench

## General Description:

The R-7186 Bolt Down Bollard is easy to install and features a 24" tall body with no exposed hardware. Its smooth and streamlined appearance reduces tripping hazards and obstruction in areas with regular foot traffic. R-7186 bollards are made from high-quality 316-grade stainless steel to withstand weathering and corrosion. Use strap wrench to secure bollard to drop-in anchor.

For more information on bollard post installation, please visit: [www.reliance-foundry.com/bollard/installation-bollards](http://www.reliance-foundry.com/bollard/installation-bollards)

## Specifications:

Height: 24"

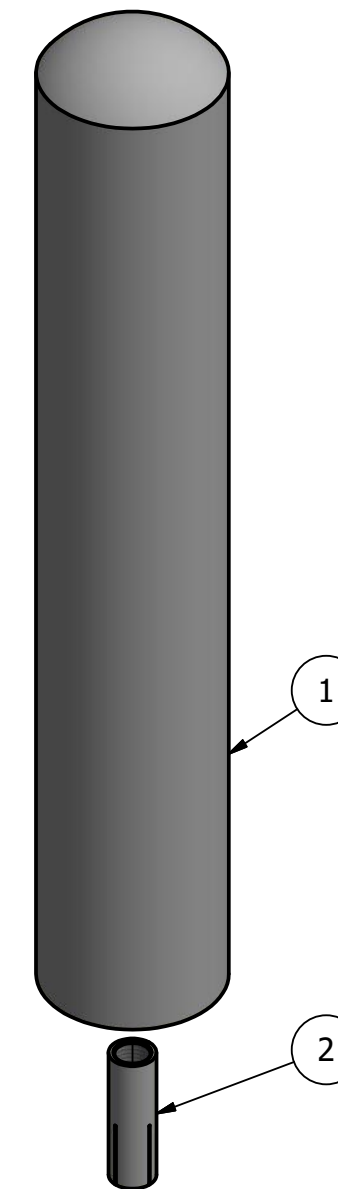
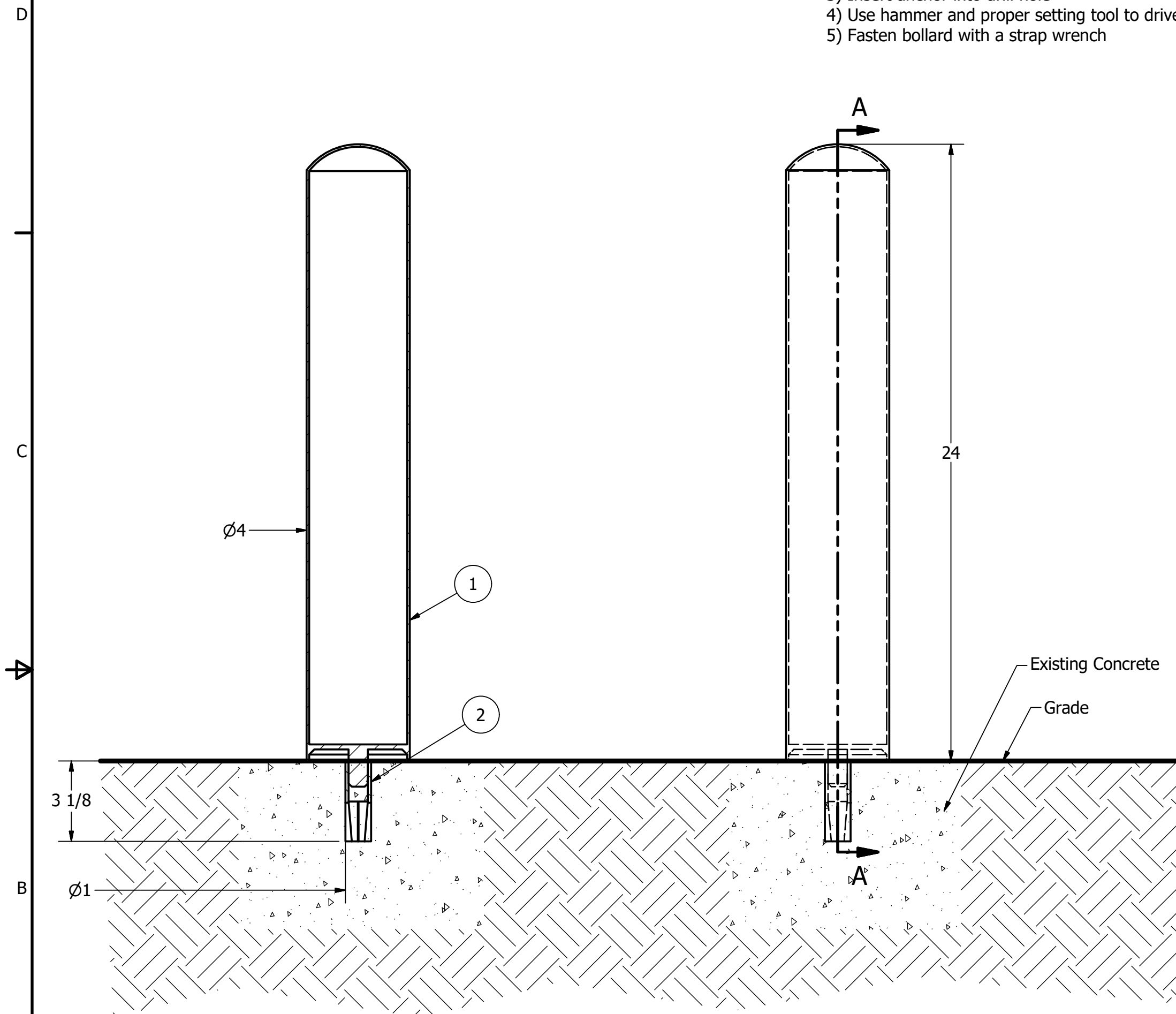
Diameter: 4"

Weight: 11 lbs

Material: Stainless Steel AISI 316

### Finish Options:

- Polished with a satin surface finish
  - Available polyester Powdercoated option
- See Reliance Foundry's standard color options at [www.reliance-foundry.com/bollard/colors-bollards](http://www.reliance-foundry.com/bollard/colors-bollards)



## Notes:

- Embedment details are for reference illustration only. Minimum foundation sizes depend on local soil conditions, weather conditions and engineering requirements.
- Bollard is provided as shown with parts listed below. Concrete foundation and/or installation not provided by Reliance Foundry.
- This drawing is not drawn to scale. Dimensions provided herein are for reference only. Please consult Reliance Foundry sales professionals if any dimension is critical to your particular installation.
- Reliance Foundry reserves the right to amend design and specifications without prior notice for product improvement.



Unit 207, 6450 - 148 Street, Surrey, BC V3S 7G7, Canada  
 1-888-735-5680 info@reliance-foundry.com  
[www.reliance-foundry.com](http://www.reliance-foundry.com)

TITLE			
Asset Protection Bollard R-7186			
SIZE	DWG NO	REV	
C	R7186	C	
NOT TO SCALE	SHEET 1 OF 1		

PARTS LIST					
ITEM	QTY	PART NUMBER	DESCRIPTION	MATERIAL	WEIGHT
1	1	R7186C	R7186 Asset Protection Bollard Cover	Stainless Steel	11 lbs
2	1	Drop-in Concrete Insert 3/4"	Drop-in Concrete Insert 3/4" - requires 1" x 3 1/8" hole (dia. x depth)	Steel Plated	1/2 lbs